

700 SERIES

The Power of Versatility



700 SERIES

- Standard top stacking
- Optional rear stacking or KIPFold
- NEW 15.6" smart tablet-like touchscreen
- KIP Contact Control Technology
- Compact by design
- KIP System K Print Management Suite
- Single Pass Black for B&W printing
- Full CMYK for Color printing
- Quick Switch between rolls and stacking locations
- Fast media installation with Simple end cap design
- Auto roll switching provides less user intervention
- Fast print production when you need it most
- Consistent print quality

**WHEN YOU
NEED TO MAKE AN
IMPRESSION**



Contact Control **Precision Imaging**

KIP 700 C Series systems utilize Contact Control Technology (CCT), the ultimate wide format imaging solution. The ability to control the placement of the toner particles through direct contact at every stage of image development ensures the highest level of accuracy and precision quality in the production of every color or black & white image.

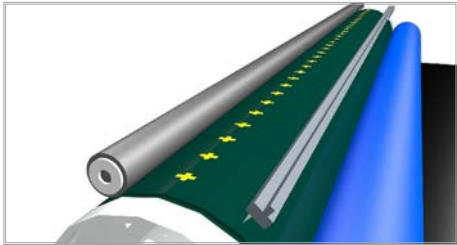
Advanced toner technology controls the image with color registration that delivers smooth color and expressive black & white image quality. True black printing ensures bold rich lines and fine details with pinpoint accuracy that are easy to read.





State of the Art Toner Technology

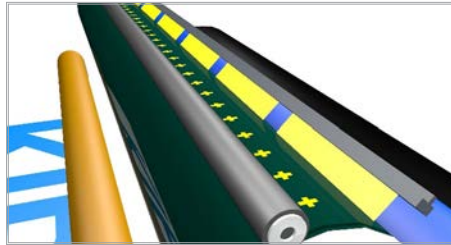
Contact Array Charging Technology (CAC)



Direct contact for consistent electric charge over the entire surface of the organic photoconductor.

- Stabilizes image quality
- Eliminates multiple system parts to include corona wires, cleaning pads, grid screens, filters and related airflow fans to reduce maintenance visits
- Eliminates ozone

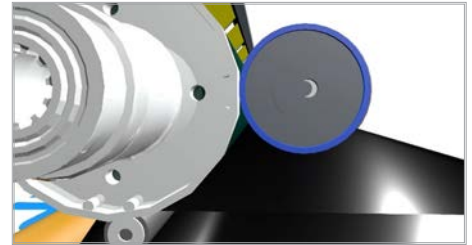
Calibrated LED Array



The calibrated LED print head creates a uniform latent image and includes KIP's Image Smoothing Technology.

- Precision tuned for luminance to generate high quality text
- Smooth, consistent color shading & grayscales

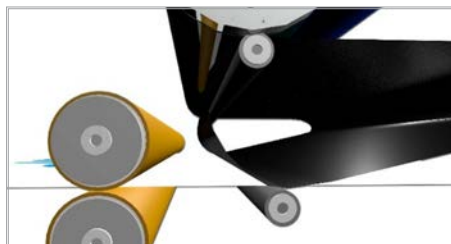
Contact Development



Direct application of toner without "developers" results in pinpoint placement on the photoreceptor's latent image. Advancements in system components further enhance image quality.

- Uniform pixel creation
- Produces improved print quality

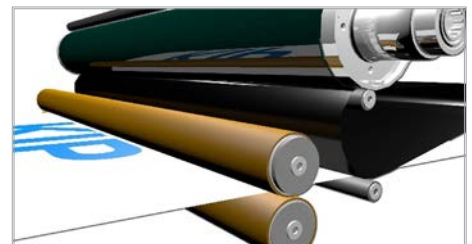
Contact Transfer



Transfers the image onto the media with precise alignment for accurate color registration through direct contact.

- Superior color registration
- Maintains sharp lines & legibility of text

Contact Pressure Fusing

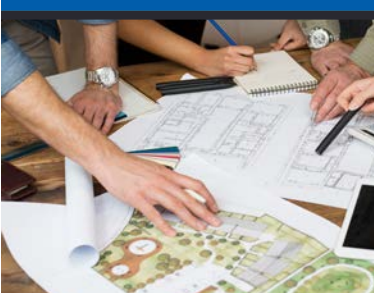


Heat & pressure fusing ensures permanent, high durable images.

- Highest durability
- Waterproof images
- Lightfast
- Streak free, fluorescent marker use



700 C SERIES



When choosing a new print system **Every Detail Matters**

It's not just one component that makes a great print system, it's a combination of features and benefits that create a dependable print system.

KIP's consistent speed technology ensures there is never a delay when printing complex files or high coverage images. Every document is printed at full rated engine speed ensuring that schedules and timelines are met day after day.

Workflow Automation simplifies everyday multi-step printing processes. Produce sets of black & white, color, or mixed sets of images and automatically, size, rotate or collate with touch of your fingertips

Protecting your investment, your data and your time are primary factors we build into the design and delivery of our products. Accessibility to engine performance, toner & media requirements, and overall system health are easily accessed via touchscreen, desktop, or web applications.

From our powerful print engines and smart software technology to our incredible image quality we have designed a KIP 700 C Series to meet the demands of today and tomorrow's print requirements.



Low Volume
6 B&W | 6 Color*



Mid Volume
8 B&W | 6 Color*



High Demand
12 B&W | 10 Color*

The benefits of **Versatility**

- Three Models - Low, Mid & High Volume
- Three Production Speeds
- Twelve Product Configurations
- Best in Class Technology
- True Touch Productivity
- Industry Leading Software – KIP System K
Smart Printing | Data Protection | System Wide Reporting

The Power of Versatility



PRINT SYSTEMS



MULTIFUNCTION SYSTEMS



PRODUCTION SYSTEMS

730



740



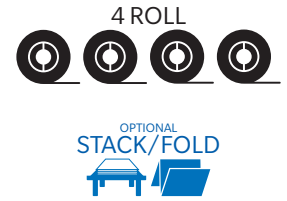
750



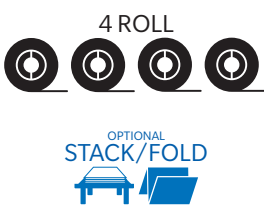
760



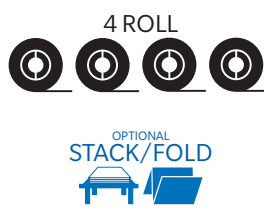
790



770



780



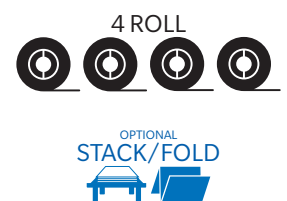
755



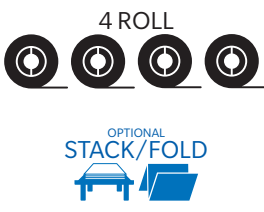
765



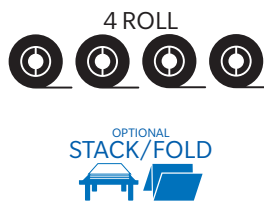
795



775



785



*All speeds represent D / A1 size prints per minute

TRUE SMART TABLET PRODUCTIVITY

PRINT, COPY & SCAN BRILLIANTLY




NEW 15.6"
Touchscreen

The NEW 15.6" KIP touchscreen has true smart tablet easy function and offers unmatched productivity with intuitive features to brilliantly automate Print, Copy, and Scan workflow.



PRINT



COPY



SCAN

- Maximize efficiency — Copy and print or scan and print at the same time
- Interrupt large print runs for quick one-off prints or copies
- KIP's Area of Interest on-screen editing let's you quickly print only the section of information you need
- KIP Cloud Connect let's you print from or scan to cloud services for project collaboration anytime, anywhere
- Pictorial user guides & QR code for videos
- Automate workflow with template creation
- One-touch access to features in 12 languages

True smart tablet function
that is easy for new or
experienced users



Intuitive Feature
Selection



Real-time Image Preview with
Area of Interest Image Editing



Auto De-skew for
Copy & Scan



Access Job History
for Easy Reprint of Jobs



Pictorial Feature &
Operator Guide



KIP Smart Link QR Code Access to Operator
Guides for Smart Phones

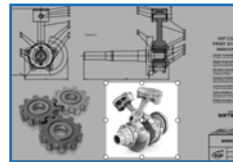
KIP System K Software

KIP System K Software Suite offers unmatched flexibility for printing projects.

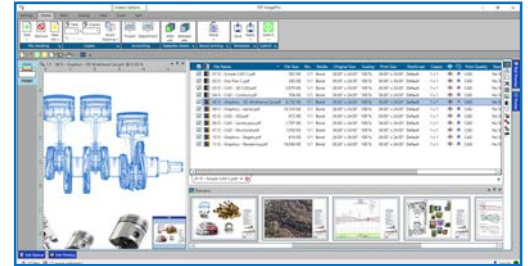


KIP ImagePro

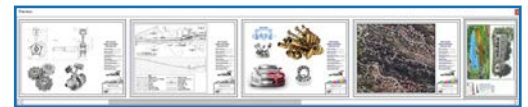
- Driverless PC App Printing
- High Definition Image Viewer with thumbnail preflight view
- Workflow Automation Templates
- Easily combine single or multi-page files from one or more file locations into a collate set
- Area of Interest for image editing
- Drag/drop and cut/paste to reorder
- Realtime access to manage print queue to maximize job priority with live printer status
- Control image scaling by percentage or single click automation to preferred page size
- Unlimited Site License — no servers or licensing required



Area of Interest (AOI)



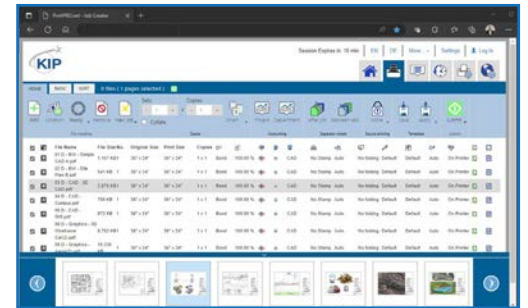
HD Viewer



Pre Flight Thumbnail Viewer

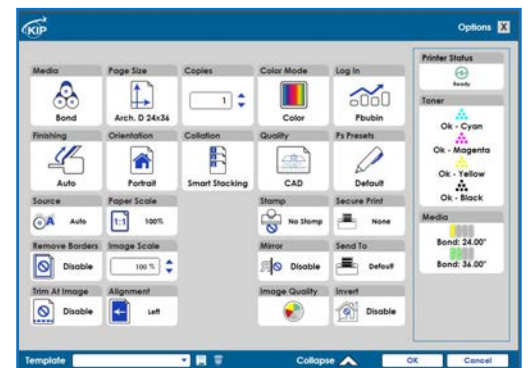
KIP PrintPro.net

- Driverless browser printing submission tool — No application or installation required
- Supports Windows, Unix, and MAC OS browsers for full control over printing parameters
- Remote printer administration and queue management
- Frees up PC, fast print job processing on KIP System K Controller
- Control image scaling by percentage or one touch automation to preferred page size
- Unlimited site license, no server or licensing required — best for small work groups



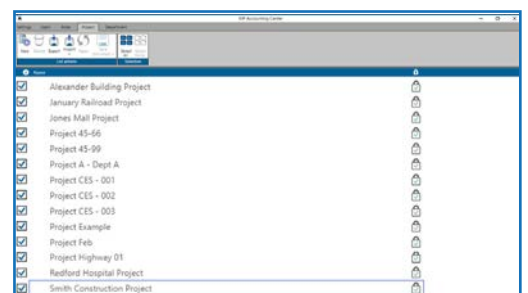
KIP Windows Driver

- Microsoft WHQL Certified
- Windows 10/11 — 32 and 64 bit operating systems
- Use from a variety of Windows based programs including Adobe, Office and CAD Applications
- Single Source Installation — No need to install multiple drivers
- Workflow Automation Templates
- Easily view and manage Job Queue and Job History with real-time printer status



KIP Accounting and Cost Center (Optional)

- Track projects and printing costs. KIP Accounting allocates print and copy volumes to departments and projects.
- Easily, print or email visually attractive reports for copy, print and scan production directly from the application.
- Enhance print system access and security
- Track Copy/Scan/Printing
- Control user features including queue management (plus many more)
- LDAP import of user information



700 C SERIES SPECIFICATIONS



System Overview

Low Volume

Mid Volume

High Demand

| Description and Productivity | 6 B&W/min 6 Color/min | | | 8 B&W/min 6 Color/min | | | | 12 B&W/min 10 Color/min | | | |
|---------------------------------|-------------------------|-------|---------------|--|-------|---------------|-----------|--|-------|---------------|-----------|
| | Top Stacking Standard | | | Top Stacking Standard / Rear Stacking Optional | | | | Top Stacking Standard / Rear Stacking Optional | | | |
| Wide Format | Model | Rolls | System | Model | Rolls | System | Footprint | Model | Rolls | System | Footprint |
| Monochrome & Color Printers | 730 | 2 | Print | 750 | 2 | Print | Single | 755 | 2 | Print | Single |
| Multifunction - Copy/Print/Scan | 740 | 2 | Multifunction | 760 | 2 | Multifunction | Single | 765 | 2 | Multifunction | Single |
| | | | | 770 | 4 | Print | Single | 775 | 4 | Print | Single |
| | | | | 780 | 4 | Multifunction | Single | 785 | 4 | Multifunction | Single |
| | | | | 790 | 4 | Multifunction | Dual | 795 | 4 | Multifunction | Dual |

| | | | | | | | | | | | |
|--|---|--|---|---|-------------------|--|---|------------------|--|--|--|
| Type / Technology | Electrophotographic LED with organic photoconductor (OPC) utilizing CMYK dry toner KIP Contact Control Technology with KIP Contact Array Charging, KIP Quick Switch Technologies, KIP Image Smoothing Technologies | | | | | | | | | | |
| Warm Up Time | Instant from standby | | | | | | | | | | |
| Dimensions <small>Excludes touch screen and top-front trays</small> | 730 / 750 / 755 | 59" (w) x 41" (d) x 35" (h) / 1500mm (w) x 1035mm (d) x 888mm (h) | | | | | | | | | |
| | 740 / 760 / 765 | 59" (w) x 41" (d) x 41" (h) / 1500mm (w) x 1035mm (d) x 1038mm (h) | | | | | | | | | |
| | 770 / 775 / 790 / 795 | 59" (w) x 41" (d) x 45" (h) / 1500mm (w) x 1035mm (d) x 1138mm (h) | | For 790 / 795 also refer to and include KIP 2300 Scanner | | | | | | | |
| | 780 / 785 | 59" (w) x 41" (d) x 51" (h) / 1500mm (w) x 1035mm (d) x 1288mm (h) | | | | | | | | | |
| Weight | 730 | 816 lb. / 370 kg | | 760 & 765 | 910 lb. / 413 kg | | 790 & 795 | 992 lb. / 450 kg | | | |
| | 740 | 865 lb. / 392 kg | | 770 & 775 | 992 lb. / 450 kg | | Note: For 790, 795 refer to and include KIP 2300 Scanner Specifications | | | | |
| | 750 & 755 | 857 lb. / 389 kg | | 780 & 785 | 1045 lb. / 474 kg | | | | | | |
| Electrical Requirements | 208-240V +6%/-10%, 50/60Hz, 14A | | | Note: For 790, 795 refer to and include KIP 2300 Scanner Specifications | | | | | | | |
| Power Consumption (Standby) | 600W | | Note: For 790, 795 refer to and include KIP 2300 Scanner Specifications | | | | | | | | |
| Power Consumption (Printing) | 1,500W | | Note: For 790, 795 refer to and include KIP 2300 Scanner Specifications | | | | | | | | |
| Power Consumption (Sleep) | 3W | | Note: For 790, 795 refer to and include KIP 2300 Scanner Specifications | | | | | | | | |

Printer

| | |
|---------------------|---|
| Print Resolution | 600 dpi x 2400 dpi |
| Output Delivery | Standard: Top Stacking - up to 100 documents based on size & media type (default: 50 for 20# / 75gsm paper) Optional: Rear Stacking - up to 700 mixed size pages (based on media type and printer model) |
| Roll Capacity | 500' / 150 m Rolls (2 Roll or 4 Roll) |
| Output Sizes Width | 11" - 36" / 297 mm - 914 mm (3" Core - industry standard widths) |
| Output Sizes Length | 19.7' / 6m (extendable to 82' / 25m based on media type) |
| Media Types | See KIP Media Guide |

Controller

| | |
|---------------------|---|
| Controller Type | System K Embedded, Microsoft® IoT Enterprise |
| Memory | 4GB DDR4 Standard (Upgradable) |
| Solid State Drive | Minimum 256 GB (Upgradable) |
| Supported File Type | PDF, PDF-A, HPGL 1/2, HP-RTL, CALS Group 4, TIFF Group 4, CIT/TG4, Grayscale TIFF, TIFF Packbits, PNG, JPEG |

Scanner

| | |
|---------------------|---|
| Scanner Type | Embedded CIS: KIP 740 / 760 / 765 / 780 / 785 KIP 2300 CCD External (dual footprint): KIP 790 / 795 |
| Scan Resolution | 600 dpi |
| Scan Format | PDF, PDF-A, Multipage PDF, TIFF, Multipage TIFF, JPEG |
| Scan Destination | Local USB (removable media), Mailboxes (local), SMB, FTP, Cloud |
| Original Size Width | 11" - 36" / 210 mm to 914 mm |
| Original Thickness | 0.05 mm - 1.60 mm (image quality over 0.25 mm thick cannot be guaranteed) Note: For KIP 790, 795 refer to KIP 2300 Scanner Specifications |

*ANSI Landscape mode