

# DrafStation™

## DrafStation RJ-900X



### 42" Compact CAD & Graphics Printer

The DrafStation RJ-900X printer is an attractively priced 42" (1080 mm) wide inkjet printer for water-based inks. The printer is fit for both startup and established businesses wanting a professional device for a wide variety of graphics and CAD applications.

You don't need to be an expert to run the DrafStation RJ-900X printer, as it is very easy to operate and maintain. The RJ-900X delivers consistent quality for volume production runs as well as short print runs. Continuous printing is made possible by the integrated motorised torque-controlled take-up system.

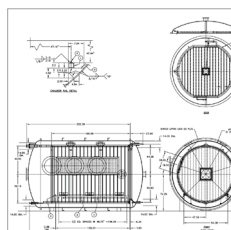
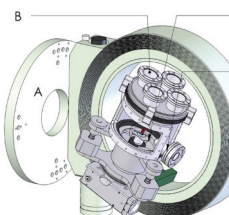
The RJ-900X model features a variable drop print head with 8 rows of 180 nozzles.

#### Product Highlights

- 42" (1080 mm) attractively priced printer
- 1440 nozzle variable drop piezo inkjet head (CMYK)
- Worry-free water based inks
- Mutoh Intelligent Interweaving printing technique inside
- Space saver design – safe & easy to use

#### Application Possibilities

Typical CAD applications encompass industrial design, space engineering, car building, production of spare parts, architectural design, GIS applications, etc ... Using dye and pigmented water-based inks, the RJ-900X is also suited for the production of high quality graphics for indoor and short term outdoor use, e.g. posters, large-format reproductions of portrait photographs, fine art reproductions, proofs of packaging designs, hard proofs of press print work etc.



# DrafStation™

## DrafStation RJ-900X



### 42" Compact CAD & Graphics Printer

### SPECIFICATIONS

#### Technical Key Specifications

Print Technology	Drop-on-demand Micro Piezo Inkjet Technology
Print Head	1
Nozzle Configuration	180 nozzles x 8 lines
Drop Mass Range (pl)	3.6 to 49.5
Head Heights (mm)	Low : 1.2 / High : 2.0

#### Media Specifications

Max. Media Width	1080 mm (42,51")
Max. Print Width	1074 mm (42,28")
Max. Media Thickness	0,3 mm / 1,3 mm *

\* : Max. media thickness is specified per head height

Media Measurements *	Ø 150 mm / 2" / 19 kg (3" adaptors optional)
----------------------	--

\* : Standard non-motorised roll-off system / standard motorised take-up system

#### Ink Specifications

Ink Type	Water-based Dye and Pigmented
Ink Volume & Colours	110 ml Pigment Black for CAD 110 ml Dye CMY for CAD 220 ml Dye & Pigment for graphics

Ink Consumption	9 ml / m <sup>2</sup> * - < 2 ml / m <sup>2</sup> **
-----------------	--

\* : Average ink consumption graphics at @ 720 dpi - coverage of 67 %

\*\* : Typical vector drawing A0 size

UV durability outdoor	Dye : 1 month Pigmented : up to 6 months
-----------------------	---

#### Performance - CAD

High Speed 360, for CAD and Line Art	360 x 360 dpi - 1 pass Bi-Dir	39.6 m <sup>2</sup> /h
Standard 720, for High-End CAD	720 x 720 dpi - 4 pass Bi-Dir	7.8 m <sup>2</sup> /h
3D Rendering	1440 x 1440 dpi - 4 pass Bi-Dir	3.9 m <sup>2</sup> /h

#### Power Consumption

During Printing / Cleaning	100 W
In Stand-by	35 W
Power Supply	AC 100-120 V / AC 200-240 - 60/50 Hz

#### Recommended Working Environment

Temperature	20 °C - 28 °C with Δt: max. 2 °C/h
Humidity	40 % - 60 % (no condensation) with ΔRH: max. 5 % RH/h

#### Machine Measurements

Width x Depth x Height	1772 x 504 x 983 mm
Weight	75.2 kg

#### Performance - Graphics (Standard weaving ON)

High Quality (1440 x 1440)	2.0 m <sup>2</sup> /h
Quality (540 x 720)	3.5 m <sup>2</sup> /h
Quality Production (540 x 720)	9.3 m <sup>2</sup> /h
Production (360 x 720)	13.0 m <sup>2</sup> /h
Speed production (360 x 360)	18.5 m <sup>2</sup> /h

#### Distributed by:

