

Scan, enhance and save your originals in one single flow

Wide-format scanning software

More than just scanning

Designed to optimize results for every use Nextimage brings out unseen details and restores even the faintest originals. Scan in vibrant color in sRGB, Adobe RGB or even full 48 bit with selected scanners.

Capture and improve maps using advanced filters color reduction options. Digitize and restore monochrome originals with unique adaptive filters and advanced background suppression.

Intuitive and powerful

Nextimage makes your workflow more productive and more connected than ever before. Let it improve your image today.

Unlimited

Utilizing the full 64 bit OS Nextimage is able to capture the longest originals in the industry. No original is too big for the software. Should limits be reached in TIF and PDF file formats Nextimage will automatically create multipage images files instead and ensure every detail is captured.



Scan



Update



Save



Copy

Nextimage Software Specifications	
Built-in wide format printers support	HP, Canon, ENCAD, Epson, MUTOH, Océ, RICOH, Roland, Xerox, others
Min System requirements	1.66GHz Dual Core Processor 2 GB RAM 7200rpm SATA hard drive with 5 GB free space High Speed USB 2.0 interface
Operating systems	64-bit Windows 10, 8, 7 and Vista
File formats supported	Multipage PDF & TIF, JPG, PDF, PDF/A, DWF, CALS, BMP, JPEG-2000(JP2), JPEG2000 Extended(JPX), TIF-G3, TIF-G4, others
Supported languages	Chinese, Dutch, English, French, German, Italian, Japanese, Korean, Spanish, Russian, Polish



Two Powerful Editions

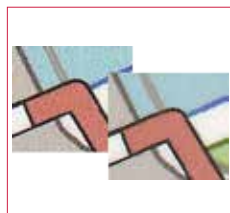
Nextimage software is available in two different editions with different feature sets. Choose Nextimage SCAN + ARCHIVE for powerful and user-friendly scanning and archiving. For the full Nextimage experience, with complete multi-function capabilities plus touch-screen compatibility, choose Nextimage REPRO.

Nextimage Editions	
Nextimage SCAN+ARCHIVE	Nextimage REPRO
Standard Windows Application	Standard Windows Application or Touch-screen mode
SnapScan: Scan – Enhance – Save	SnapScan: Scan – Enhance – Save
Full Scan Functions	Full Scan Function
Batch scanning	Batch scanning
Multi-page PDF, TIF files	Multi-page PDF, TIF files
TIF, JPG, PDF, PDF/A, DWF, CALS, BMP, JPEG-2000(JP2), JPEG2000 Extended(JPX), TIF-G3, TIF-G4, others	TIF, JPG, PDF, PDF/A, DWF, CALS, BMP, JPEG-2000(JP2), JPEG2000 Extended(JPX), TIF-G3, TIF-G4, others
Automatic file naming templates	Automatic file naming templates
Customize/Edit index color palette	Customize/Edit index color palette
Accounting	Accounting
Full Image Adjustment Control	Full Image Adjustment Control
Auto-rotate	Auto-rotate
Auto-align / deskew	Auto-align / deskew
Sharpen/Smoothen filter	Sharpen/Smoothen filter
Black/White level adjustment	Black/White level adjustment
RGB level adjustments	RGB level adjustments
Histogram view	Histogram view
Measurement tool	Measurement tool
TWAIN driver*	TWAIN driver*
-	Full Copy Functions
-	Supports unlimited printers
-	Batch copy
-	Closed loop color calibration
-	ICC color management

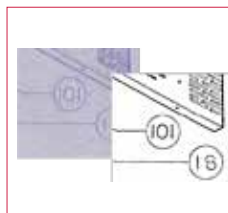
Nextimage software delivers a complete set of tools to ensure image quality for both **archiving** and **printing**



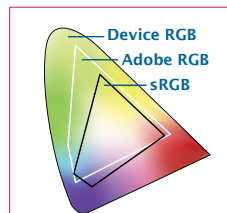
Full 64 bit gives you the ability to work with larger data sets in memory, making scanning and image processing faster.



Nextimage includes special technologies to optimize color



– and special technologies to optimize black/greyscale



Unmatched color spaces, supporting ICC/ICM profiles

DESIGNSUPPLY supporting creativity
 Est. 1991
 0800 018 23 23
 sales@designsupply.com

Copyright 2017 © Contex / CTX/Nextimage4 ENG_DS A4 1116



Read more at contex.com



Contex solutions work with all leading large-format printers. For full list, see www.contex.com

