

Scan A2 / C-size originals of any size or shape  
– or scan documents up to A1 / D-size

## For Creative, Careful Document Handling Oversized and Book Scanning



### More details

The all new IQ FLEX takes a new approach to wide format flatbed scanning, focusing on you and how you work, while also pushing the boundaries of scanning technology.

### More features

Easy to use yet incredibly flexible with options such as scan to file, scan to print and special features for book scanning.

The scanner comes complete with a built-in controller and touchscreen the size of a tablet PC. This enables you to operate, edit, annotate, mark-up right from the screen with no need for extra PC.

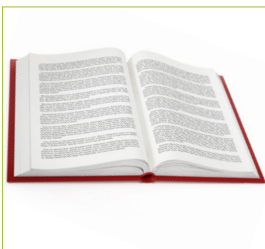
HP / Canon / EPSON  
**Integrated**

### More possibilities

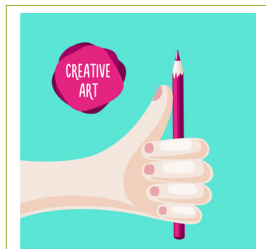
Protect fragile originals by placing them gently on the scanner bed or utilize the flexibility to scan books, textiles and/or artwork you would like to transform into digital content.

### More quality

Operate by touch panel or install the software NextImage and run it from a PC or simply use the rainforest365 app. Scan to PC via Ethernet or WIFI via dongle.



Ideal for book scanning - 2 pages in one scanning



Scan your large fragile documents, textiles or artwork



Manage your jobs using the smart touch screen



Only WIFI enabled large format scanner. Speed up to 150 Mb / sec.

Scan size	A2 / C-size A1 / D-size
Oversize scanning	Scan width Arc C +30 mm = 18" +30 mm = 487.2 mm and Scan length Arc C +30 mm = 24" +30 mm = 639.6 mm
Scan Area	18 x 24" (457 x 610 mm)
Maximum Image Size	24 x 36" (610 x 914 mm)
Scanning speed <sup>1</sup> (inch/sec.): Scanner speed while scanning a 18" x 24" wide document	
200 dpi RGB Color or Grayscale/ Monochrome	Full scan bed in 6 seconds

### Capture Technology

Optical resolution	1200 x 1200 dpi
Maximum Resolution	9600 dpi
CIS Technology	Contex CleanScan+
Maximum Media Thickness	Unlimited
Accuracy	0.1% +/- 1 pixel
Data Capture (color/mono)	48-bit / 16-bit
Color Space	Adobe RGB / Device RGB / RAW RGB / sRGB
Effective number of Pixels	23017 pixels
Energy Star Compliant	Yes

### Connectivity

Supported OS (incl. drivers)	64-bit Windows 10, 8, 7 and Vista
File formats <sup>2</sup>	TIF, JPG, PDF, PDF/A, DWF, CALS, BMP, JPEG-2000(JP2), JPEG2000 Extended(JPX), TIF-G3, TIF-G4, others
Download Destinations	Dropbox, Google Drive, Microsoft Sky Drive, Box.com. rainforest365 ready
Network	Gb Ethernet
Software <sup>3</sup>	NextImage5, AutoCAD®, Microstation™, ArcGIS™ and all other CAD, GIS and 64-bit TWAIN application driver included for use with EDM and other imaging software

### Embedded Controller

Touch Screen	7" Multi Touch.Screen. 800 x 480 pixels
Processor	Atom Quad-Core
Memory (ram/flash)	8GB / 16 GB
Destinations	Network PC's, Cloud, Email, Copy and USB key
File formats	TIF, JPG, PDF, PDF/A, DWF, CALS, BMP, JPEG-2000(JP2), JPEG2000 Extended(JPX), TIF-G3, TIF-G4, others
Supported printers	Selected HP, Canon and EPSON wide format printers. See full list on Contex.com

### Power, weight and dimensions

Power Consumption (Ready / Sleep Mode / Scanning)	Max 10W / 0.5W / 23W – ENERGY STAR certified
Power Requirements	100 – 240V, 60/50Hz, 80W
Unpacked Weight/ Dimensions (L x W x H*)	35 kg (77lbs) / 661 mm (26") x 1176 mm (46") x 194 mm (8")
Packed Weight	43 kg (95lbs)
Packaging method	Foam shock protection frame inside thick cardboard box

### Certifications and Warranty

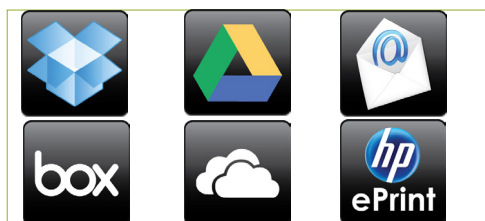
Operating Maximum Ambient Temperature	This product has been submitted and evaluated for use at the maximum ambient temperature's specification of 40°C
Certifications/compliance	RoHS, cUL, CE, Customs Union, CCC, VCCI, KC, BSMI, Ukr, ENERGY STAR certified
Safety	IEC 60950. Certificates: cUL (USA and Canada), CE (Europe), CCC (China), PSE (Japan), EAC (Russia, Kazakhstan, Belarus), KC (Korea), BSMI (Taiwan), UKR (Ukraine) and BIS (India)
Electro Magnetic Compatibility (EMC)	Compliant with Class A requirements, including FCC rules (USA), ICES (Canada), EMC Directive (EU), CCC (China), VCCI (Japan), EAC (Russia, Kazakhstan, Belarus), KC (Korea), BSMI (Taiwan), UKR (Ukraine) and BIS (India)
Environmental	ENERGY STAR® Certified, EuP (EU), WEEE (EU), RoHS (EU) and REACH (EU)
Country of Origin	Designed in Denmark, Manufactured in China
Warranty	2-year warranty and fast, easy parts replacement
What's in the box	Scanner, 2 m Ethernet cable, external power supply, installation guide, calibration poster, calibration sheet and cleaning cloth

1 Scanning speeds depend on computer configuration. Contex recommends Intel Core Duo, Core 2 Duo, or better processors, 2GB RAM. Speed tests performed using Nextimage software, PC with Intel Core i5-2500 Quad processor, 8GB RAM, 7200rpm HDD, Windows 7 64-bit Ultimate.

2 Requires optional Nextimage software.

3 Contex applications create industry standard raster file formats that can be used in any CAD or GIS application.

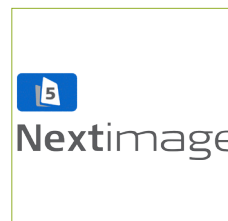
All trademarks remain the property of their respective holders, and are used only to directly describe the product being provided. Their use in no way indicates any relationship between Contex and the holders of the said trademarks.



Send documents directly to your preferred cloud destinations.



rainforest365 ready - Securely scan and share in one step



Made for the Contex Award Winning software for scanning, copying and printing

More at [contex.com](http://contex.com)



Contex IQ "A" Grade



X-Rite i1Profiles for professional color results

Est. 1991

**DESIGNSUPPLY**  
supporting creativity

0800 018 23 23

[sales@designsupply.com](mailto:sales@designsupply.com)

Technology leadership

**contex**  
WHEN IMAGING MATTERS