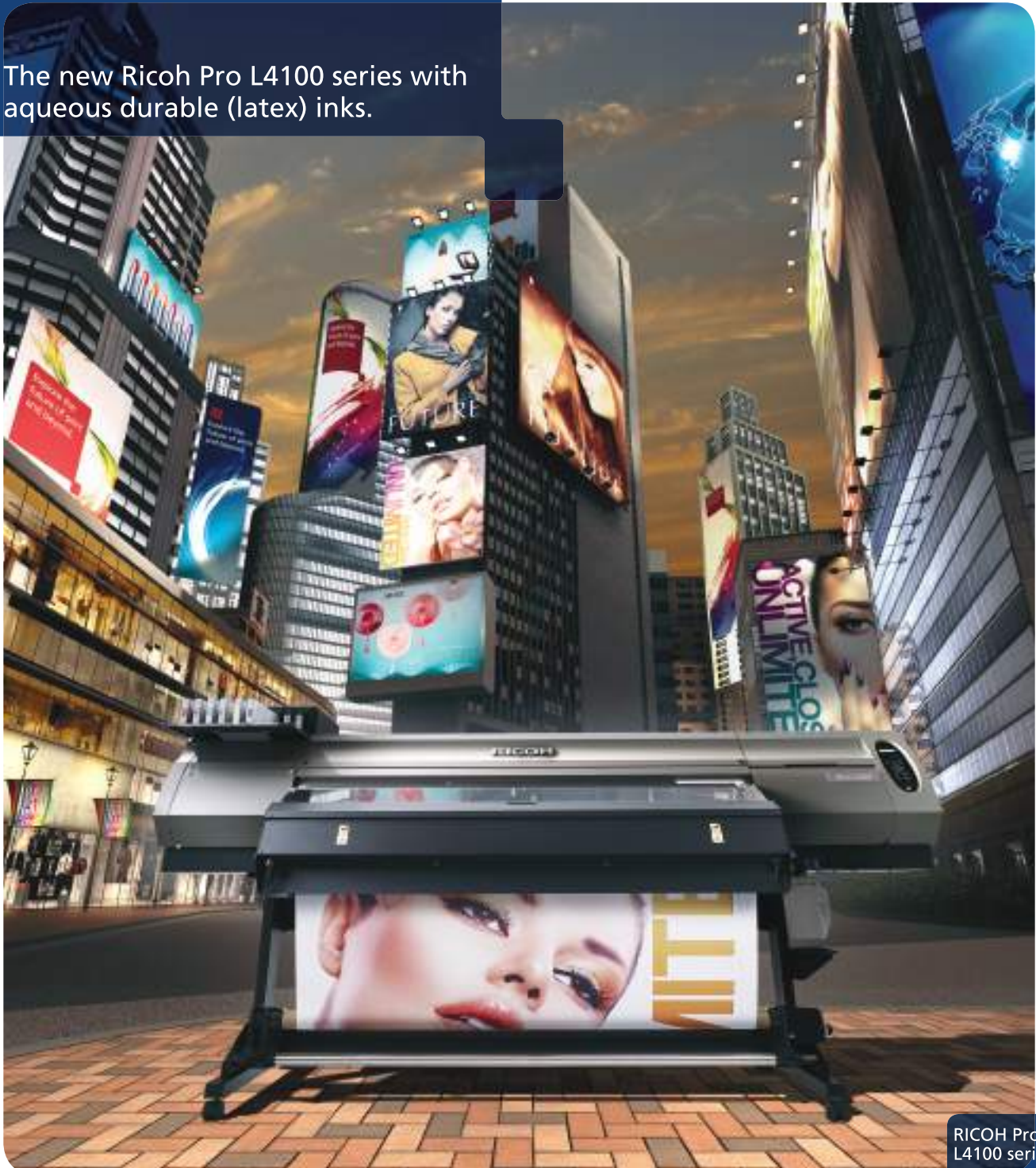


# Enlarge your business with Ricoh.

**RICOH**  
imagine. change.



The new Ricoh Pro L4100 series with aqueous durable (latex) inks.



RICOH Pro  
L4100 series

18.2  
m<sup>2</sup>/h

**Your ideal way into large-format.**

The new Ricoh Pro L4100 series is the perfect solution when you want to complement your offering with display printing.

Hugely versatile, these printers will give you a wide variety of display material in high quality colour, thanks to the Ricoh GEN5 print heads. By using the latest patented multidrop jetting technology, these heads can create a droplet as small as four picoliters, resulting in smoother colour gradation with no need for light magenta or cyan. What's more, thanks to the addition of orange and green inks, you'll also benefit from brighter images as well as a greater colour gamut – up to 93% of the Pantone® range.

**Durable inks for inside and out.**

The L4100 series uses eco-friendly, durable latex inks, which are suitable for indoor and outdoor use. The anti-fade qualities are good and sufficiently weatherproof to last two years in most conditions. Cartridges are reusable as well, reducing waste and saving money.

**Print on almost anything.**

You can print on a huge variety of media such as films, textiles, vinyls and papers as well as creating POS/POP displays. You can even use the L4100 series as a label printer for short runs. A maximum output of 18m<sup>2</sup>/hr means the best productivity in its class. And there's no waiting for secondary processes either, because drying is almost instantaneous, thanks to its built-in heat unit.

**Cleaner and safer.**

Finally, low VOCs mean no special ventilation is needed, making installation and operation of the Ricoh Pro L4100 series easier and safer.



Go large-format with the  
new Ricoh Pro L4100 series.



## Product highlights.



### Ink cartridge configurations

4-colour mode (x2 CMYK)  
6-colour mode (CMYKOrGr)  
6-colour + white mode  
(CMYKOrGr + x2 W)  
The green and orange enable  
approximately 93% of the  
Pantone® colour chart to be  
matched.  
Prints three layers in one pass.

### Temperature control

Fan unit vents keep temperature  
constant for stable printing.



### Reusable ink cartridge

The ink cartridges can be used  
repeatedly by changing the  
ink packs. This eco-cartridge  
methodology helps to reduce  
waste costs.

### Media output

The printed media slides on to the platen  
where three heaters are installed. These fix  
and dry the printed image as it slides through.  
There is an electrostatic sheet to prevent  
sticking. This enables secondary processing,  
such as lamination, to take place immediately.





#### Print heads

Ricoh GEN5 high-speed piezo durable print heads produce a multiple drop size with a minimum of just four picoliters.



#### Operation panel

This intuitive and easy to operate display panel incorporates machine status display, data activity and heater indicators.



#### Cleaning solutions cartridge

For easy and regular maintenance of print heads. Situated on back of machine.

#### Roll holder / take up device

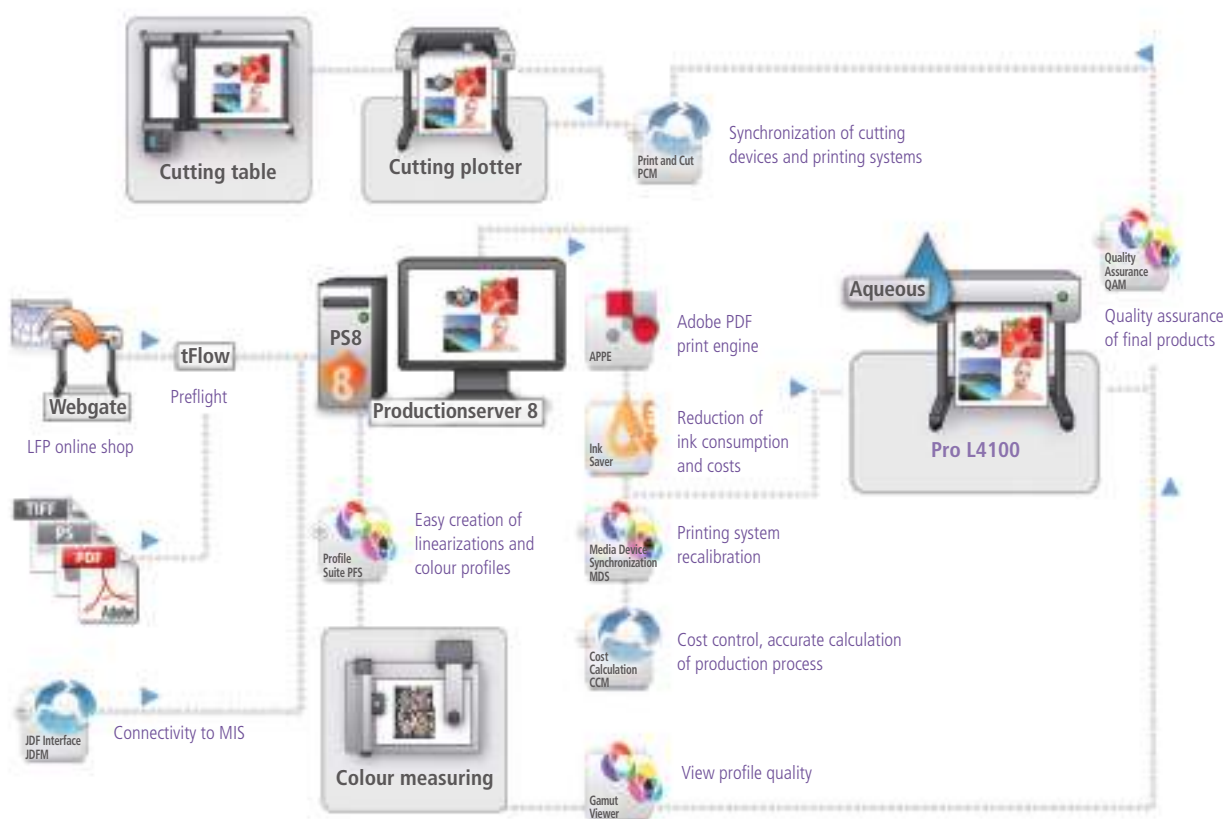
There is no need to wait for printed material to dry which means it can be rolled onto the take up device immediately after printing. The device supports a material core from 210mm to 1.6m in width with a maximum weight of 25kg and a media inner core of 66mm and outer diameter of 180mm.

#### Waste tank

For easy and convenient disposal of ink waste.



## Production server



The L4100 series includes the option for the PS8 production server from ColorGATE, the technological leader in workflow automation for large format printing.

The server has the latest Adobe PDF print engine (APPE) which makes smooth, highly automated PDF workflow easy. You will also benefit from a user friendly interface with outstanding functionality, accurate colour management, rapid profiling, recalibration and quality control.

### Clever cost control

A useful Cost Calculator feature lets you provide precise quotes before printing and the Container function positions each job optimally to ensure minimum material usage.

There are also two clever optional extras available, too. Firstly an Ink Saver module that can cut ink use to a minimum by intelligent replacement of cyan, magenta and yellow in neutral areas with black ink. Secondly, there's the Print and Cut PCM module that lets you control cutting plotters and tables.



## Applications and media.

## Outdoor advertising

Banners, billboards, building wraps, flags, outdoor banners and vehicle graphics.

Film, tarpaulin, synthetic paper OPP,  
PET films, self-adhesive vinyl and textiles.

## Indoor advertising / retail, POS and POP

Advertising posters, POP / POS, pop-up / roll-up displays and window graphics.

Coated / uncoated paper, film, self-adhesive vinyl and textiles.

## Exhibition and event graphics

Floor graphics, light boxes, hanging banners and display graphics.

*Paper, synthetic paper, film, self-adhesive vinyl and textiles.*

## Vehicle graphics

Wraps, side panels, window stickers, logos.  
*Self-adhesive vinyls and films.*

## Decoration

Wall covering.

Textiles, paper, film and self-adhesive vinyl.

## Signage

Double-sided signs, information signs, light boxes, personalised signs, soft signage, directional signs and window stickers.

Coated / uncoated paper, fabric, film and self-adhesive vinyl.

## Photos and fine art prints

Designer prints, fine art prints and photo enlargements.

Coated / uncoated papers, film, self-adhesive vinyl and textiles.

## Labels and flexible packaging

Food, wine, beverage, pharmaceuticals, cosmetics and household goods.

Paper, synthetic paper, OPP and PET film.

# RICOH Pro L4130/L4160

## SYSTEM SPECIFICATIONS

### General Specifications

|                            |  |
|----------------------------|--|
| Printing Process           | On demand Piezo inkjet system (RICOH GEN5 two head in line)<br>Aqueous durable (latex) ink<br>900dpi, 1200dpi  |
| Ink Type                   | 4 colors   |
| Resolution                 | 900 x 900: Bi/Uni 6/12/24 pass<br>1200 x 1200: Bi/Uni 8/16/32 pass<br>1200 x 900: Bi/Uni 6/12/24 pass<br>1200 x 120: Bi/Uni 8/16/32 pass   |
| Drawing Mode (scan x feed) | 6 colors<br>6 colors + white   |
| Usable Ink                 | 900 x 900: Bi/Uni 12/24/48 pass<br>900 x 1200: Bi/Uni 16/32/64 pass<br>1200 x 900: Bi/Uni 12/24/48 pass<br>1200 x 1200: Bi/Uni 16/32/64 pass<br>CMYK, Or, Gr, W  |
| Ink Configuration          | 4 colors: CMYK<br>6 colors: CMYK, Or, Gr<br>6 colors and white: CMYK, Or, Gr, + W<br>4 colors: CMYK<br>– 600ml two cartridges for each color<br>6 colors: CMYK, Or, Gr<br>– 600ml one cartridge for Y, K, Or, Gr<br>– 600ml two cartridges for C & M<br>6 colors and white: CMYK, Or, Gr, + W<br>– 600ml one cartridge for CMYK, Or, Gr<br>– 220ml two cartridges for white  |
| Capacity of Ink Cartridge  | Thin coated paper/PET/tarpaulin/<br>weatherproof PVC/window film/<br>polyester cloth/cotton/duratrans<br>L4130: 1,361mm<br>L4160: 1,610mm<br>Side facing outward   |
| Media Type                 | L4130: 1,371mm maximum<br>L4160: 1,620mm maximum L4130/<br>L4160: 210mm minimum<br>0.3mm or less<br>Maximum 180mm or less<br>2" or 3"<br>Maximum 25 kg or less<br>190mm or less  |
| Printing Width (max)       | L4130: 1,371mm maximum<br>L4160: 1,620mm maximum L4130/<br>L4160: 210mm minimum<br>0.2mm or less<br>Left and right end: 15mm (default)<br>Front: 150mm<br>Rear: 0mm  |
| Printing Surface           | Left and right end: 15mm (default)<br>Front: 150mm<br>Rear: 200mm<br>The greater of +/- 0.3mm) or +/- 0.3% of the distance   |
| Roll Media                 | Media feed width<br>Thickness<br>Outside diameter<br>Inside diameter<br>Media weight<br>Take-up roll<br>Media diameter   |
| Cut Sheet Media            | Media feed width<br>Thickness<br>Roll media  |
| Print Margin               | Leaf media<br>Left and right end: 15mm (default)<br>Front: 150mm<br>Rear: 200mm<br>The greater of +/- 0.0079" (0.2mm) or +/- 0.1% of the distance<br>+/- 0.5mm /1,000mm<br>5.0mm or less / 10 meter variable<br>L range: 1.8mm<br>M range: 2.3mm<br>H range: 2.8mm<br>Cutting of Y direction by the head cutter<br>1.0mm or less (steps) Bottle<br>type 2000 cc<br>USB2.0<br>100-120V, 50-60Hz, 220-240V<br>50-60Hz<br>Less than 1440W x 2 (100-120V), 1800W x 2 (200-240V)<br>L4130: (2,634 x 854 x 1435mm)<br>L4160: (2,879 x 854 x 1,435mm)<br>L4130: Less than 203 kg.<br>L4160: Less than 240 kg. |
| Distance Accuracy          | Reproducibility  |
| Perpendicularity           |  |
| Media Skew                 |  |
| Head Height Adjust         |  |
| Cutting                    | Direction<br>Accuracy  |
| Waste Ink Tank Interface   |  |
| Power Source               |  |
| Power Consumption (max)    |  |
| Dimension (W x D x H)      |  |
| Weight                     |  |

### Operation Panel

|  |  |
|--|--|
| Hard keys and LCD  |  |
| LCD: 20 characters 2 lines   |  |
| Displayed languages: Japanese, English, German, French, Italian, Spanish, Portuguese |  |
| Print Speed:   |  |
| L4160 Full Color   | 4C 6C/6C+W   |
| Draft  | 1200 x 900, ND, 6P, Bi 195.9 18.2 97.9 9.1             |
| High Speed   | 1200 x 1200, ND, 8P, Bi 148.5 13.8 75.3 7.0            |
| Standard   | 900 x 900, VD, 12P, Bi, Hi 118.4 11.0 60.2 5.6         |
| High Quality   | 1200 x 1200, VD, 16P, Bi, Hi 71.0 6.6 35.5 3.3         |
| White  | Single Layer W 2 Layers 6C+W 3 Layers 6C+W+6C          |
| Standard   | 900 x 900, VD, 24P, Uni, Hi 31.2 2.9 10.7 1.0 10.7 1.0 |
| High Quality   | 1200 x 1200, VD, 32P, Uni, Hi 20.4 1.9 6.4 0.6 6.4 0.6 |
| L4130 Full Color   | 4C 6C/6C+W   |
| Draft  | 1200 x 900, ND, 6P, Bi 184.0 17.1 93.6 8.7             |
| High Speed   | 1200 x 1200, ND, 8P, Bi 139.9 13.0 71.0 6.6            |
| Standard   | 900 x 900, VD, 12P, Bi, Hi 110.8 10.3 54.8 5.1         |
| High Quality   | 1200 x 1200, VD, 16P, Bi, Hi 67.8 6.3 34.4 3.2         |
| White  | Single Layer W 2 Layers 6C+W 3 Layers 6C+W+6C          |
| Standard   | 900 x 900, VD, 24P, Uni, Hi 29.0 2.7 9.6 0.9 9.6 0.9   |
| High Quality   | 1200 x 1200, VD, 32P, Uni, Hi 19.3 1.8 6.4 0.6 6.4 0.6 |

### Ricoh Software RIP

|             |                       |  |
|-------------|-----------------------|--|
| Required    | Printer Driver        | Windows Vista SP2 or later (32/64 bit), Windows 7 Professional, Ultimate, Enterprise (32/64 bit), Windows 8 Pro Enterprise XP Professional Edition (32 bit) SP3+, XP Home Edition (32 bit) SP3+ CPU: Intel Core i3 3.10GHz or more Chip set: Intel chip set Memory: 3GB or more (32 bit), 6GB or more (64 bit) HDD: 500GB recommended (NTFS format) Interface: Ethernet, USB 1.1/2.0 |
| Environment | Installed PC OS       | Windows XP SP3 or later (32 bit), Windows Vista SP2 or later (32/64 bit), Windows 7 Professional, Ultimate, Enterprise (32/64 bit), Windows 8 Pro Enterprise, Mac OSX 10.3.3 – 10.7 Japanese, English, Italian, Greek, Spanish, Czech, German, French, Polish, Portuguese, Chinese (simplified/traditional), Korean  |
|             | Client PC OS          | Japanese, English, Italian, Spanish, German, French, Portuguese, Chinese (simplified/traditional), Korean  |
|             | Supported OS language | Japanese, English, Italian, Spanish, German, French, Portuguese, Chinese (simplified/traditional), Korean  |
|             | Language support      | EPS, PS, PDF (1.5 or later is not allowed), TIFF, JPEG, BMP PS Font: Standard 60 European fonts (adding fonts are not allowed)   |
| Input Data  | Format                | Adobe Illustrator 8, 9, 10, CS, CS2, CS3, CS4, CS5 Adobe Photoshop 5, 6, 7, CS, CS2, CS3, CS4, CS5   |
|             | Application data      |  |

### Production

#### Server

**Colorgate PS8** (Adobe PDF print engine)  
Intuitive control and user interface.  
Optimal colour reproduction.  
High quality modular components.  
Maximum productivity  
Ricoh software RIP\*

#### Environmental

New aqueous durable (latex) inks have very low emissions of VOCs (volatile organic compounds) and lack of odour requiring no ventilation.  
Ink cartridges can be used repeatedly, reducing waste and cost.

#### Consumables\*

| Ink Pack | Cartridge Capacity |
|----------|--------------------|
| Black    | 600ml              |
| Cyan     | 600ml              |
| Magenta  | 600ml              |
| Yellow   | 600ml              |
| Orange   | 600ml              |
| Green    | 600ml              |
| White    | 220ml              |

\*For maximum performance and yield, we recommend using genuine Ricoh parts and supplies.

Specifications are subject to change without notice.

**RICOH**  
imagine. change.

[www.ricoh-europe.com](http://www.ricoh-europe.com)

The facts and figures shown in this brochure relate to specific business cases. Individual circumstances may produce different results. All company, brand, product and service names are the property of and are registered trademarks of their respective owners.

Copyright © 2013 Ricoh Europe PLC. All rights reserved. This brochure, its contents and / or layout may not be modified and / or adapted, copied in part or in whole and/or incorporated into other works without the prior written permission of Ricoh Europe PLC.

Est. 1991  
**DESIGNSUPPLY**  
supporting creativity

E | [sales@designsupply.com](mailto:sales@designsupply.com)  
T | 020 7842 1555 W | [www.designsupply.com](http://www.designsupply.com)  
Unit 2, Green Lane Business Centre, New Eltham, London, SE9 3TL

