

HP large-format printing solutions for defense

Est. 1991
DESIGNSUPPLY
supporting creativity



Timely access to accurate information is critical in any defense situation. And, as you well know, getting the right information to the right people at the right place and time is paramount to successful operations deployment.

Large-format printing solutions play an unsuspecting, yet key, role in this process. Delivering digital print-on-demand capabilities, HP printers and multifunction printers (MFPs) speed up the production and delivery of satellite and orthophotos, maps, drawings, and

posters while also easily converting analog to digital. HP large-format printers and MFPs deliver the quality, speed, and performance demanded by the defense industry. They facilitate collaboration among leaders while also delivering IT peace of mind with advanced manageability and security features. They're built with a robustness that can withstand extreme environmental conditions. And, with the protective armor case¹, you can safeguard your large-format HP DesignJet printer in transit.

HP DesignJet T830 Multifunction Printer with armor case¹



Large-format printing applications for defense



Cartographic maps



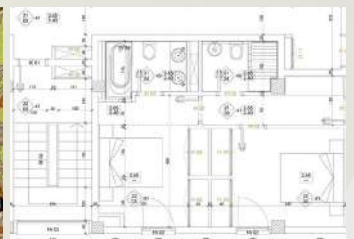
Satellite and orthophotos



Posters for training and military exercises



CAD and line drawings



Defense environments

Whether your printing takes place in the map production facility, barracks, field of operation, or all three locations, it's important that you choose the HP large-format printer or MFP that best addresses the needs of that specific environment.

Map production facility

Equip teams with the most accurate and up-to-date photos, maps, and drawings, which are centrally printed in the map production facility.

The HP PageWide XL 5000 Printer provides digital print-on-demand capabilities that speed up print production and the exchange of information—all while minimizing map warehousing and waste.




Original HP Pigmented inks are certified durable using the ISO 11798 standard. It proves that prints will withstand harsh exposure to light, water, abrasion and handling, and long-term storage and heat, and still be legible in the future.

For ISO 11798 certificates information go to: www.hp.com/go/printpermanence



HP PageWide XL 5000 Printer

Powerful, efficient monochrome and color production with up to 30% savings in total production costs²

Color and line accuracy	 HP PageWide XL pigment inks $\pm 0.1\%$ ³
Data processing	8 GB DDR3; 1x 500 GB HDD, self-encrypted with AES-256; Intel Core i3 processor
Print driver	PDF, HP-GL/2, and PostScript®
Print width	Up to 1000 mm (39.4 in)
Maximum print speed	9 m ² /min (27.8 ft ² /min) ⁴
IT integration	
HP Web Jetadmin compatibility	✓
HP Embedded Web Server	✓
HP Universal Print Driver (UPD)	✓

hp.com/go/pagewidexl/5000series

Optimize your experience with HP PageWide XL technology and reach new levels of productivity by taking advantage of the complete end-to-end solution, including HP SmartStream printing software, HP PageWide XL Folder, and HP PageWide High-capacity Stacker.

Barracks

While much strategic planning occurs in the barracks, HP large-format printing solutions can be counted on to deliver the productivity, manageability, and security required of this environment. HP DesignJet printers and MFPs offer advanced security features for network management, data transfer, and controlled printer access. While delivering IT peace of mind, these products also enable seamless analog/digital workflows that facilitate collaboration among key decision makers.



HP DesignJet Z6200 Photo Production Printer

Fastest 42-in graphics production printer with unrivaled print quality⁵



HP DesignJet T2530 Multifunction Printer series

Print/scan/copy, share—maximize workgroup productivity, enterprise security

Color and line accuracy

8 HP Vivid Photo Inks (pigment-based ink) ± 0.1%⁶

6 Original HP inks (dye-based ink, pigment-based matte black ink) ± 0.1%⁹

Data processing

32 GB (virtual) memory,⁷ 160 GB hard disk, Intel VR 1 GHz processor

128 GB (file processing) memory,¹⁰ 500 GB hard disk, Intel 1.67 GHz processor

Print driver

HP-GL/2, HP-RTL drivers for Windows® (optimized for AutoCAD, from version 2000 to current), PostScript® Windows, Linux, and Mac drivers with optional PostScript®/PDF Upgrade Kit

HP-GL/2, HP-PCL3GUI drivers for Windows and Mac OS X; PostScript drivers for Windows, Linux, and Mac OS X¹¹

Print width

Up to 1067 mm (42 in)

Up to 914 mm (36 in)

Maximum print speed

113 m²/hr (1225 ft²/hr)⁸

60 m²/hr (645 ft²/hr)¹²

Integrated scanner

—
Easily integrate with HP SD Pro 44-in Scanner



IT integration

HP Web Jetadmin compatibility



HP Embedded Web Server

Yes, with optional PostScript®/PDF Upgrade Kit



HP Universal Print Driver (UPD)



hp.com/go/designjetZ6200
hp.com/go/designjetsdproscanner

hp.com/go/designjetT2530

Field of operation

Printed maps are often needed immediately, even in the field of operation. Robust large-format HP DesignJet printers and MFPs are up to the challenge. They can operate in extreme environmental conditions. You can also transport your HP DesignJet printer, and protect it from dust and other harsh elements once it's in the field, with the armor case.¹



**HP DesignJet Z5600
PostScript® Printer**

Quick and efficient multi-roll, 44-inch high-impact graphics printing



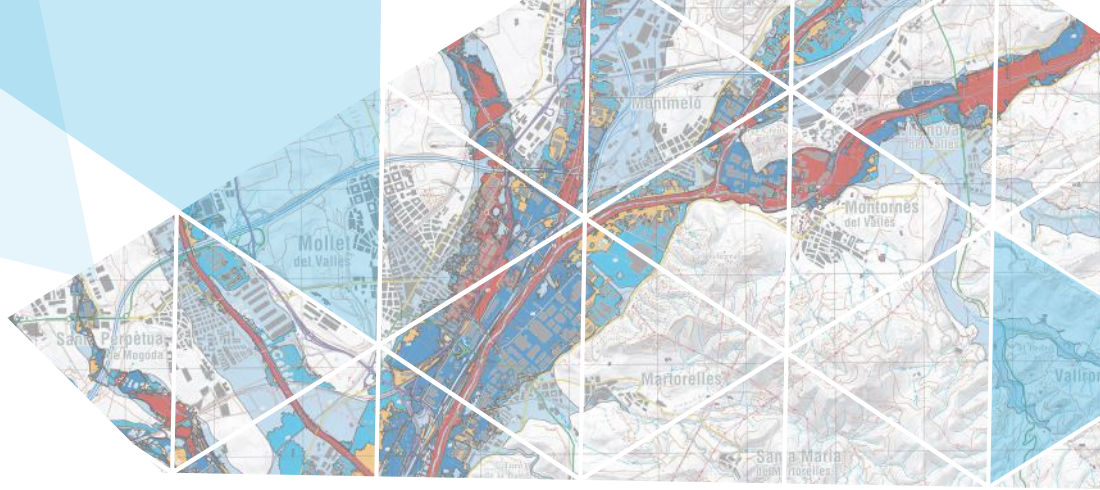
**HP DesignJet T730
Printer / HP DesignJet T830
Multifunction Printer**

36-inch, robust and compact Wi-Fi printer for CAD and general-purpose applications

Color and line accuracy	6 HP Vivid Photo Inks (pigment-based ink) $\pm 0.1\%$ ⁶	4 Original HP inks (dye-based ink, pigment-based matte black ink) $\pm 0.1\%$ ¹⁶
Data processing	64 GB (virtual) memory, ¹³ 320 GB hard disk, ¹⁴ IC SOC 800 MHz processor	1 GB memory, 1.5 GHz Arm A9 Single Core processor
Print driver	HP-GL/2, HP-PCL3GUI drivers for Windows and Mac OS X; PostScript® drivers for Windows and Mac OS X	HP-GL/2, HP-RTL drivers for Windows; HP PCL 3 GUI driver for Windows and Mac OS X
Print width	Up to 1118 mm (44 in)	Up to 914 mm (36 in)
Maximum print speed	60 m ² /hr (650 ft ² /hr) ¹⁵	41 m ² /hr (445 ft ² /hr) ¹²
Integrated scanner	—	✓ Only with HP DesignJet T830 MFP
Printer weight	86.5 kg (190.7 lb)	48 kg (105.8 lb) / 62.5 kg (137.8 lb)
Operating temperature	5 to 40° C (41 to 104° F)	5 to 40° C (41 to 104° F)
IT integration		
HP Web Jetadmin compatibility	✓	✓
HP Embedded Web Server	✓	✓
HP Universal Print Driver (UPD)	✓	✓

hp.com/go/designjetZ5600

hp.com/go/designjetT730
hp.com/go/designjetT830



Large-format printing media for defense

HP large-format printing solutions include a broad range of printing materials. With so many options in finish, size, and style, it's easy to find the ideal media for the defense industry's specific needs and requirements. HP large format printing materials, Original HP inks, and HP large-format printers are engineered to work together as a system to provide uncompromising image quality, consistency, durability, and value.

Ongoing HP innovation brings alternatives to traditional print solutions and ensures the correct media for the unique demands and applications of the defense industry, including:

HP Durable Banner with Dupont™ Tyvek® (compatible with HP DesignJet Z-series and T-series printers¹⁸)

- Recommended applications: cartographic maps, posters for training and military exercises
- Moderately water-resistant,¹⁹ tear-resistant prints
- Operating humidity: 20 to 80% RH
- Recyclable²⁰

HP Premium Matte Polypropylene (compatible with HP DesignJet Z-series and T-series printers¹⁸)

- Recommended applications: cartographic maps, satellite and orthophotos
- High-quality look and feel of photo material, durable performance, moderately water-resistant prints¹⁹
- Recyclable²⁰

To explore the wide range of media in the HP large format printing materials portfolio for HP DesignJet and PageWide XL printers, visit HPLFMedia.com.

¹ The armor case is an optional accessory available only for specific printer models, and in specific countries.

² Production costs savings based on an HP PageWide XL 5000 Printer compared with a combination of a mid-volume monochrome LED printer and a mid-volume color production printer (both under \$40,000 USD) as of April, 2015. Production costs consist of supplies and service costs, printer energy costs, and operator costs. For testing criteria, see hp.com/go/pagewidexlclaims.

³ ± 0.1% of the specified vector length or ± 0.2 mm (whichever greater) at 23° C (73° F), 50-60% relative humidity, on A0/E printing material in Best or Normal mode with HP Matte Polypropylene and HP PageWide XL pigment inks.

⁴ Measured using 91-cm (36-in) print width.

⁵ Compared to large-format inkjet printers under \$25,000 for graphic applications. Based on the fastest rated color speeds as published by manufacturers as of January 2010. Test methods vary.

⁶ ± 0.1% of the specified vector length or ± 0.2 mm (whichever greater) at 23° C (73° F), 50-60% relative humidity, on A0/E HP Matte Film in Best or Normal mode with HP Vivid Photo Inks.

⁷ Based on 1 GB RAM. Expandable to 1.5 GB RAM through an HP DesignJet qualified SODIMM included only in the optional HP DesignJet PostScript®/PDF Upgrade Kit accessory.

⁸ Mechanical printing time. Printed in Fast mode with Economode on, using HP Bright White Inkjet Paper (bond) and Original HP inks.

⁹ ± 0.1% of the specified vector length or ± 0.2 mm (whichever greater) at 23° C (73° F), 50-60% relative humidity, on A0/E HP Matte Film in Best or Normal mode with Original HP inks.

¹⁰ Based on 1.5 GB RAM.

¹¹ Included with PostScript® printers only.

¹² Mechanical printing time. Printed in Fast mode with Economode and Original HP inks.

¹³ Based on 640 MB RAM.

¹⁴ Optional security solution of Encrypted HDD (available only in specific countries).

¹⁵ Maximum rate of output for color image, 100% color coverage (Bands file). Printed in Fast mode with

Economode on, on HP Bright White Inkjet Paper (bond), maximum roll size, with HP Vivid Photo Inks.

¹⁶ ± 0.1% of the specified vector length or ± 0.2 mm (whichever greater) at 23° C (73° F), 50-60% relative humidity, on A0/E HP heavyweight media in Best or Normal mode with HP Matte Film.

¹⁷ Based on 36-inch Wi-Fi integrated MFPs available in the market as of September, 2015.

¹⁸ Visit HPLFMedia.com for detailed information on the exact list of compatible HP large-format printers.

¹⁹ Moderately water resistant with Original HP 771 Vivid Photo Inks. Water resistance testing by HP Image Permanence Lab on a range of HP media and follows ISO 18935 method. For more information, see HPLFMedia.com/printpermanence.

²⁰ HP Large Format Media take-back program availability varies. Some recyclable HP papers can be recycled through commonly available recycling programs. Recycling programs may not exist in your area. See HPLFMedia.com/hp/ecosolutions for details.



Est. 1991

DESIGNSUPPLY 
supporting creativity

0800 018 23 23

sales@designsupply.com

© Copyright 2017 HP Development Company, L.P. The information contained herein is subject to change without notice. The only warranties for HP products and services are set forth in the express warranty statements accompanying such products and services. Nothing herein should be construed as constituting an additional warranty. HP shall not be liable for technical or editorial errors or omissions contained herein.

4AA6-9921ENE, July 2017, Rev. 1