

Scan, enhance and save your originals in one single flow

Wide-format scanning software

More than just scanning

Designed to optimize results for every use Nextimage brings out unseen details and restores even the faintest originals. Scan in vibrant color in sRGB, Adobe RGB or even full 48 bit with selected scanners.

Capture and improve maps using advanced filters color reduction options. Digitize and restore monochrome originals with unique adaptive filters and advanced background suppression.

Intuitive and powerful

Nextimage makes your workflow more productive and more connected than ever before. Let it improve your image today.

Unlimited

Utilizing the full 64 bit OS Nextimage is able to capture the longest originals in the industry. No original is too big for the software. Should limits be reached in TIF and PDF file formats Nextimage will automatically create multipage images files instead and ensure every detail is captured.



Scan



Update



Save



Copy

| Nextimage Software Specifications | |
|---------------------------------------|---|
| Built-in wide format printers support | HP, Canon, ENCAD, Epson, MUTOH, Océ, RICOH, Roland, Xerox, others |
| Min System requirements | 1.66GHz Dual Core Processor 2 GB RAM 7200rpm SATA hard drive with 5 GB free space High Speed USB 2.0 interface |
| Operating systems | 64-bit Windows 10, 8, 7 and Vista |
| File formats supported | Multipage PDF & TIF, JPG, PDF, PDF/A, DWF, CALS, BMP, JPEG-2000(JP2), JPEG2000 Extended(JPX), TIF-G3, TIF-G4, others |
| Supported languages | Chinese, Dutch, English, French, German, Italian, Japanese, Korean, Spanish, Russian, Polish |



Two Powerful Editions

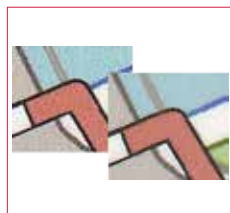
Nextimage software is available in two different editions with different feature sets. Choose Nextimage SCAN + ARCHIVE for powerful and user-friendly scanning and archiving. For the full Nextimage experience, with complete multi-function capabilities plus touch-screen compatibility, choose Nextimage REPRO.

| Nextimage Editions | |
|--|--|
| Nextimage SCAN+ARCHIVE | Nextimage REPRO |
| Standard Windows Application | Standard Windows Application or Touch-screen mode |
| SnapScan: Scan – Enhance – Save | SnapScan: Scan – Enhance – Save |
| Full Scan Functions | Full Scan Function |
| Batch scanning | Batch scanning |
| Multi-page PDF, TIF files | Multi-page PDF, TIF files |
| TIF, JPG, PDF, PDF/A, DWF, CALS, BMP, JPEG-2000(JP2), JPEG2000 Extended(JPX), TIF-G3, TIF-G4, others | TIF, JPG, PDF, PDF/A, DWF, CALS, BMP, JPEG-2000(JP2), JPEG2000 Extended(JPX), TIF-G3, TIF-G4, others |
| Automatic file naming templates | Automatic file naming templates |
| Customize/Edit index color palette | Customize/Edit index color palette |
| Accounting | Accounting |
| Full Image Adjustment Control | Full Image Adjustment Control |
| Auto-rotate | Auto-rotate |
| Auto-align / deskew | Auto-align / deskew |
| Sharpen/Smoothen filter | Sharpen/Smoothen filter |
| Black/White level adjustment | Black/White level adjustment |
| RGB level adjustments | RGB level adjustments |
| Histogram view | Histogram view |
| Measurement tool | Measurement tool |
| TWAIN driver* | TWAIN driver* |
| - | Full Copy Functions |
| - | Supports unlimited printers |
| - | Batch copy |
| - | Closed loop color calibration |
| - | ICC color management |

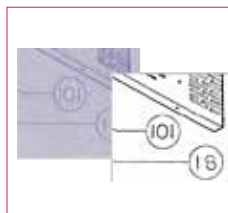
Nextimage software delivers a complete set of tools to ensure image quality for both **archiving** and **printing**



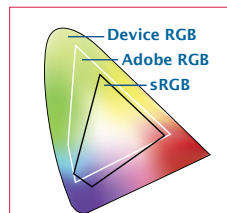
Full 64 bit gives you the ability to work with larger data sets in memory, making scanning and image processing faster.



Nextimage includes special technologies to optimize color



– and special technologies to optimize black/greyscale



Unmatched color spaces, supporting ICC/ICM profiles

supporting creativity

DESIGNSUPPLY

0800 018 23 23

sales@designsupply.com

Est. 1991

Copyright 2017 © Contex / CTX/Nextimage4 ENG_DS A4 1116



Read more at contex.com

HP ready **EPSON ready** **Canon ready** **Océ ready**

Contex solutions work with all leading large-format printers. For full list, see www.contex.com

Technology leadership

contex
WHEN IMAGING MATTERS