



Canon imagePROGRAF iPF820

Wide-Format Colour Inkjet Printer



Reliability.....	Excellent
Ease of Assembly.....	Very Good
Ease of Network Setup.....	Excellent
Paper Handling	Excellent
Ease of Use.....	Very Good
Administrative Utilities	Very Good
Print Drivers.....	Very Good
Feedback to Workstations	Very Good
Applications Compatibility.....	Excellent
Colour Management	Good
Colour Print Quality	Very Good
Black Print Quality	Very Good
Colour Print Productivity.....	Excellent
Black Print Productivity	Excellent
Feature Set.....	Very Good

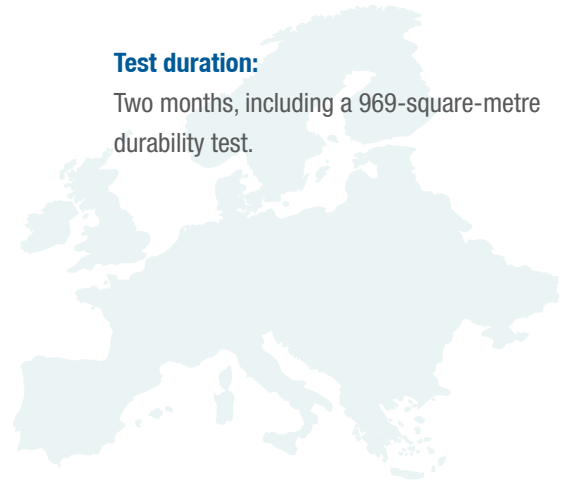
BLI RECOMMENDATION

Exhibiting the fastest colour and black print speeds of any wide-format printer tested to date, the Canon imagePROGRAF iPF820 performed commendably during its 969-square-metre BLI evaluation, demonstrating that it can capably satisfy the needs of Architectural, Engineering and Construction (AEC), Computer-Aided Design (CAD) and Geographic Information Systems (GIS) professionals, as well as many general corporate wide-format workflows and print for pay/production environments. The 44-inch imagePROGRAF iPF820 generated a broad range of architectural plans and maps with exacting detail, as well as high-quality monochrome and colour graphics on heavyweight coated media. Its dual-roll design offers users the ability to quickly switch between two different media types. The five-ink set, which includes both dye and pigment black inks, produced colour that remained highly consistent throughout the testing period. This highly reliable unit also offers very good ease of use, with BLI technicians citing very few incidences of incorrect first-time loading due to operator misalignment during feeding, and comprehensive guidance from the control panel.

BLI highly recommends the Canon imagePROGRAF iPF820 for AEC, CAD and GIS professionals. Furthermore, when used with premium media, this device provides acceptable high-quality graphics, including sign applications as well.

Test duration:

Two months, including a 969-square-metre durability test.



STRENGTHS

- Flawless reliability
- Excellent colour consistency throughout the test period
- Dual-roll and cut-sheet compatibility
- Fast switching between rolls
- Ability to optimise performance for many types of media
- Highly productive in both colour and monochrome modes
- Feature-rich printer driver includes Free Layout utility for custom nesting
- 80-GB hard drive with 30 individual mailboxes allows for easy job storage and reprinting
- Quick wake-up and first-page out time from sleep mode
- Borderless printing
- Media-saving barcode feature

WEAKNESSES

- Four-colour process black when monochrome is selected in print driver (pure black is attainable by using the print driver's BK ink setting)
- The plastic fixed spindle head may break during roll reloading
- Inability to import files for direct printing
- Catch bin does not support printing of collated sets
- No pop-up or e-mail alerts to inform user when job is completed

TEST RESULTS AND OBSERVATIONS

+, – and ○ represent positive, negative and neutral attributes, respectively.

RELIABILITY

EXCELLENT

- + The Canon imagePROGRAF iPF820 is certified highly reliable by BLI, completing its two-month evaluation, which included a 969-square-metre durability test, without experiencing a single jam and with no service calls required.

EASE OF ASSEMBLY

VERY GOOD

- + The printer is very easy to install. An HTML manual that supports nine languages and includes step-by-step assembly instructions is included with the device. Two people are needed to lift the printer onto its stand; otherwise one person can easily complete the assembly, which takes approximately one hour.

- + The imagePROGRAF iPF820 comes with five 330-ml ink tanks that are installed after assembly by following easy step-by-step instructions on the control panel.

EASE OF NETWORK SETUP

EXCELLENT

- + The Canon imagePROGRAF iPF820 is equipped with a 10/100BaseT/TX Ethernet port. An IP address can easily be assigned to the printer directly on the control panel.
- + The print driver CD auto launches and users can select from three options— Install Printer Driver, Install Individual Software and Create the Installer Files. The Install Printer Driver option requires eleven clicks and installs the driver, Status Monitor Utility, Media Configuration Tool, Digital Photo Front-Access and imagePROGRAF Print Plug-In for Word. The printer port is created automatically during driver installation. The second selection, Install Individual Software, offers users eight separate options— GARO (Graphic Arts with Raster Operations) print driver, HDI print driver, Status Monitor, Media Configuration Tool, Digital Photo Front Access, Print Plug-In For Word, ICC profiles and Device Setup Utility. Create the Installer Files is a utility that allows the print driver to be downloaded to any networked workstation rather than an administrator or user having to install the driver onto each workstation separately.
- + When using the Install Printer Driver option, all installation instructions are selected before installation commences with no further need for administrator input until all applications have been fully loaded.
- + A second CD, Canon iPF820 User Manual, is also provided. It auto-launches and installs the manual in HTML format in six clicks of the mouse. It is available as a selection in All Programs and from the print driver and Status Monitor.

PAPER HANDLING

EXCELLENT

- + The Canon imagePROGRAF iPF820 supports two paper rolls, which can be loaded into the printer simultaneously. The two rolls can be of different types and widths, depending on a user's needs. Minimum roll width is 17" (43.2 cm); maximum roll width is 44" (111.8 cm); maximum outer roll diameter is 150mm and maximum supported media weight is 280gsm. The printer also supports cut-sheet media; the minimum supported size is 8" x 10" (20.3 x 25.4 cm), and maximum supported size is 44" x 59" (111.8 cm x 18 m).
- + The imagePROGRAF iPF820 is compatible with a wide range of media, from plain to satin and photographic glossy papers, to name just a few. There are more than 30 (depending upon region) pre-set paper selections and five special paper selections on the imagePROGRAF iPF820 control panel from which to choose. Each selection automatically enables specific ink, cutting and drying specifications for the particular paper, therefore it is recommended that care be used when making a paper selection on the control panel and at the printer driver.

- + Users have the option of programming the exact length of the roll for any media type installed in the printer, which is reported on the control panel, and the length is automatically counted down as the roll is depleted. If a job requires more media than is already loaded, the user is prompted to replace the roll.
- + Unlike with some other wide-format devices evaluated by BLI, sheet paper length and width are automatically detected by the imagePROGRAF iPF820 once the sheet is properly loaded.
- + The two hubs or end caps that hold a roll of paper in place on the spindle are smartly designed. They are octagonal rather than circular in shape, so that when the spindle is placed on a table top it doesn't roll.
- During the test, a fixed plastic spindle head broke off during a media roll reload. A sturdier spindle head connection would reduce the risk of this occurrence.
- Finished prints exit the printer from the front and are deposited into a cloth catch basket situated directly below the printer. The basket holds numerous prints, depending on the media type, but because they do not stack neatly, they get out of order quickly and tend to curl.
- If a media roll is depleted part-way through a page, the printer continues printing on the second media roll. If there is no other roll installed, the user is prompted to install a new roll. The partially printed page will then reprint.

EASE OF USE

VERY GOOD

- The control panel has nine clearly labelled buttons and a small LCD display measuring 5.5cm x 5cm with seven lines of text. LEDs include on/offline status, data, message, paper source and HDD. When online, the display shows the paper type of each roll, as well as the ink levels. Pressing the control panel Menu button provides an extensive display of sub-menus.

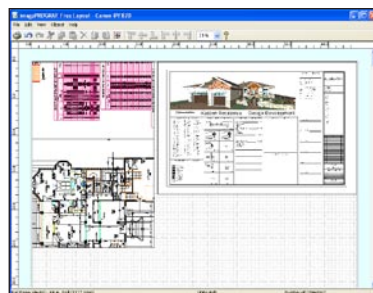


Canon imagePROGRAF iPF820 Control Panel

- + Step-by-step instructions for both sheet and roll loading are provided on the control panel. The display changes for each step of the procedure at a predetermined interval, and users can press the pause button to pause the display. Additionally, instructions are provided on the control panel for loading a roll onto the spindle.
- Both 2" and 3" end caps are supplied for different core sizes.
- + Loading cut-sheet media is an easy process. The user must align the sheet's lead and right edges against orange horizontal and vertical guide lines, respectively,

from the front of the printer. Once the media is loaded, the user selects the media type on the control panel and the printer automatically detects the sheet's dimensions and then indicates "online" on the control panel display. This information is transmitted to both the Web page and the Status Monitor.

- + A control panel menu setting enables the media type and length to be printed in barcode and text at the end of the loaded roll before the roll is removed, a useful media-saving feature not available on all wide-format printers. The user need only reinstall the media roll and the remaining loading process is automated as a result of the barcoded information. The media type and length are indicated on the control panel and reported back to both the Web page and the Status Monitor. The barcoded roll can then be transferred and used on other Canon wide-format printers of the same width or wider.
- + Replacement of the five ink cartridges is easy, simply requiring users to open a cover and lift a lever to unlock the cartridge.
- + Replacing the single print head is automated and accessed from the control panel with instructions displayed on the LCD.
- + The unit has one integrated printhead, which makes maintenance a faster process than with some competitive devices that have separate printheads for each colour.
- + Maintenance cartridge (waste ink tank) replacement is a simple pull-out/push-in operation.
- Users can delete a job just by pressing the stop button; no confirmation is required.
- The printer stand is on wheels that are rather small, making it difficult to access the locking devices.
- + Users have a choice of nine languages that can be set from the control panel.
- Manual advancement and cutting of roll paper when installing a new or previously used roll is a multi-step procedure that must be initiated from the control panel. Users must first take the printer offline, then press the down arrow to advance media to the desired length. At this point, the printer must be put back online. Users then must press the Menu button, the Paper Cutting button, the right arrow, the Yes button, and then OK to make the final cut. It would be preferable to have a cut button directly on the control panel.
- + Layout of multiple pages is simple using the Free Layout feature in the GARO print driver.

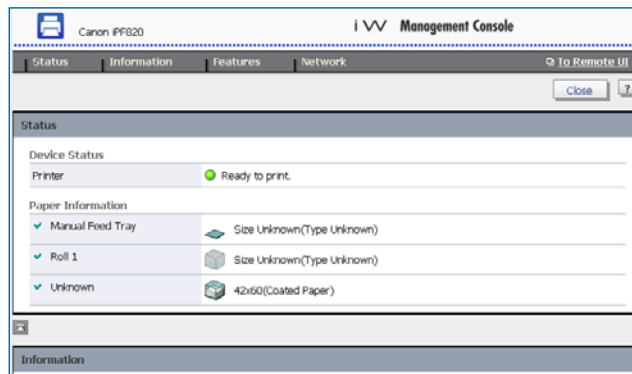


Free Layout utility in Canon GARO driver

ADMINISTRATIVE UTILITIES

VERY GOOD

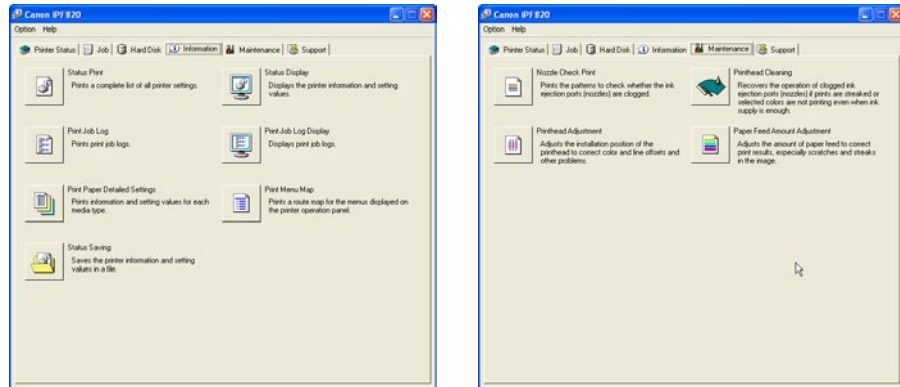
- + Users can view the progress of print jobs and paper and ink supplies in real time for all networked imagePROGRAF printers using the Status Monitor. Jobs can be cancelled or paused but not prioritized in the Job tab. As a workaround for prioritizing, users can pause previously submitted jobs and allow current jobs to print next. The Status Monitor can be configured to launch automatically, or users can open it from the Windows Programs menu.
- + Administrators can set up e-mail alerts for the imagePROGRAF iPF820 using Canon's iW Management Console server-based fleet management tool.



Canon iPF820 being monitored remotely via iW Management Console

- + Jobs stored in a mailbox on the hard drive can be accessed, reprinted, moved and deleted using either the Status Monitor or Remote UI Web server. There are also four different security modes -- non-saving mode, high-speed data erasure, secure high-speed data erasure and secure data erasure -- that are compliant with the U.S. Department of Defense standard DoD5220.2-M and enable users to securely delete files from the hard disk drive.
- + The Status Display, located in the Status Monitor's Information tab, provides users with paper usage information, including total area of each individual roll and sheet used, displayed in both square feet and square metres, and overall total area printed. Configuration, stored job management and network settings are also listed here.
- The Print Job Log Display, located in the Status Monitor's Information tab, offers a list of only the last 32 jobs that were printed on the imagePROGRAF iPF820, a smaller list than many competitive models offer. Job information includes job name, page count, status, start time, end time, total time, size, media type and ink consumed for each job. Users can save this information as a text file.
- Canon offers several third-party software solutions for job accounting, although none was evaluated.
- + The Media Configuration Tool, a separate utility, allows for the updating and editing of media between the printer and driver and allows users to add or delete media types in both the print driver and on the printer control panel.
- Unlike some competitive Web utilities, Remote UI, the Web page, does not offer direct printing of files, All files must be printed from an application.

- + The product has a “hot folder” feature for using the product with Canon iR devices, in which files dropped into a networked folder can be automatically printed.
- + Within the status monitor and administration section of the Remote UI, administrators can create .txt files of device settings for quick reinstallation / duplicate placements.
- + Two separate e-mail addresses can be set up to receive notifications when device issues or errors arise.



Status Monitor provides extensive desktop management and maintenance capabilities.



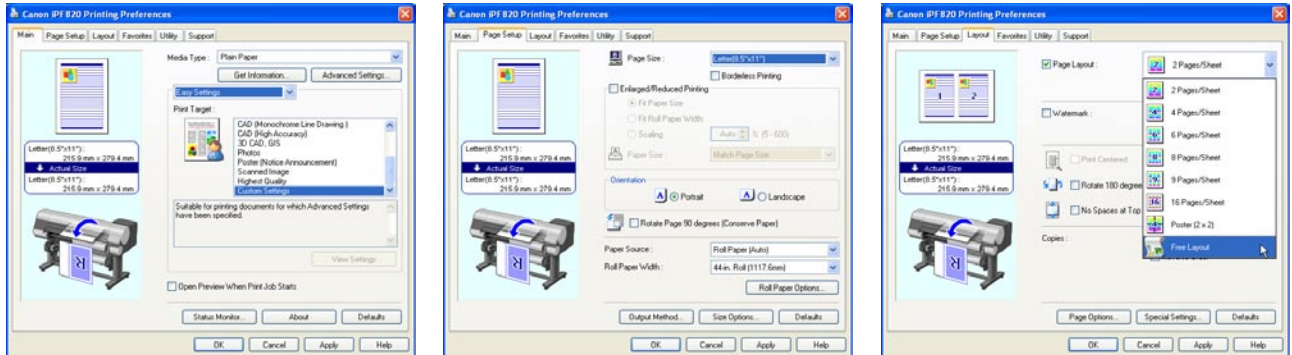
The last 32 jobs, including details on ink usage and print duration, can be viewed.

PRINT DRIVER

VERY GOOD

- + The Canon imagePROGRAF iPF820 GARO print driver is graphical and includes six easy-to-navigate tabs. The most commonly used features, such as Media Type and Print Target settings, can be selected from the Main tab.
- + An HDI driver (used with AutoDesk) is also included on the CD and is loaded using the Install Individual Software option. BLI did not test the HDI as part of its evaluation.
- + From the Easy Settings menu there are 13 print target settings that provide the best settings for the chosen print job. From the Advanced Settings menu, various quality and colour settings are available.

- + Unlike the drivers on some competitive devices, the Canon imagePROGRAF iPF820's GARO driver provides a single-page overview of each one-touch print profile, allowing users to make quick decisions on which setting best suits their requirements.



Canon GARO Print Driver

- + A Borderless Printing selection prints images directly to the edge of the media, which can reduce trimming and finishing requirements.
- + One-touch selection in the print driver's favourites tab can be configured for setting combinations of paper, size and quality settings.
- The "Rotate page 90 degrees" selection from the Page Setup tab can be selected to conserve paper.
- + For Windows users, the Free Layout function, an easy-to-use image-nesting feature selectable in the print driver, enables documents and/or images of different file formats to be merged onto a single page and printed together across the paper's width. Each time a document is sent with the Free Layout feature enabled, the Free Layout window opens automatically. Each submitted image appears in the window in the order it was received. When all files have been sent, the user can reposition them by clicking and dragging the image on the monitor to its desired location. Once all the images are in place, users can press the print button and they will be printed on one page.
- + Maintenance procedures, including nozzle check, printhead adjustment, print-head cleaning and media feed adjustment, can be performed via the print driver, Status Monitor and the Web page when logged on as an Administrator. This is a preferable alternative to activating these functions at the printer's control panel, which is required by some other devices. These can be completed remotely and managed by an IT department if the device is in another location.
- + For optimal image quality, the imagePROGRAF iPF820 possesses an auto-switching mechanism that automatically uses the correct black ink, either dye or pigment, depending on the media type chosen in the print driver. This is an advantage over competing devices that require different black inks to be manually changed when a change in media is made on the printer.
- The procedure for generating black-only output from the print driver is not intuitive for users. When choosing monochrome mode in the print driver (the logical choice for black-only printing), four-colour process black is produced on all media types. To print with black ink only, users must choose the Monochrome

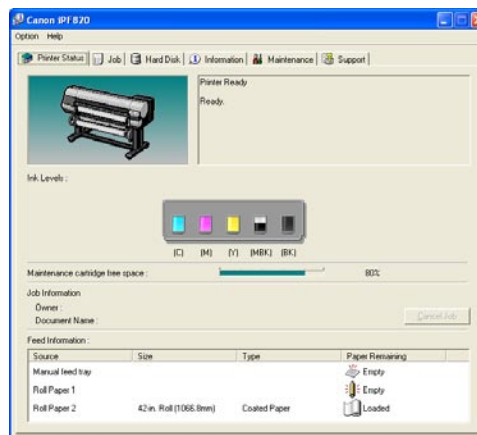
(BK Ink) selection that becomes available only when the Print Priority is changed from Image to Line Drawing/Text.

- + An economy mode setting, which can be selected when the driver is in draft mode, reduces ink usage, offering cost of ownership advantages for internal / drafting workflows.

FEEDBACK TO WORKSTATIONS

VERY GOOD

- + The Status Monitor can be displayed either as a pop-up window or as a taskbar icon and can be configured to automatically launch either when printing starts and/or when the Windows operating system is started. Errors and/or warnings, such as ink out, paper out and ink low, can be set to display.
- No pop-up or e-mail alerts indicating when jobs are completed are offered.
- + The Status Monitor can be accessed directly from the main tab of the print driver.



Status Monitor provides key information to desktop users.

- Ink-low or ink-out conditions are reported on the Web page and in the Status Monitor in 20-percent increments. Users should have replacement tanks on-hand when a status of 20 percent is displayed. When one matte black cartridge is empty, printing will stop even though the second matte black tank may not be empty.
- + There are three paper-type mismatch settings selectable in the control panel, which govern how a mismatch in paper size or type will be handled. Users can choose “None,” in which no action will be taken; “Warning,” which will display a warning message on the control panel and in the Status Monitor but will still print the job; or “Pause,” which will pause the job from printing until corrective action is taken.
- Remote User Interface, the Web page, offers much of the same information found in the Status Monitor. Noteworthy features found on the Web page include secu-

urity settings, including SNMP and IPP authentication and IP and MAC address filtering, that can be enabled by an administrator.

- Paper and ink status information is available on the Web page. The Print Job selection on the Web page only displays the job that is printing or processing, not a list of pending jobs. A job can be cancelled if the user is logged on in administrator mode.

APPLICATIONS COMPATIBILITY

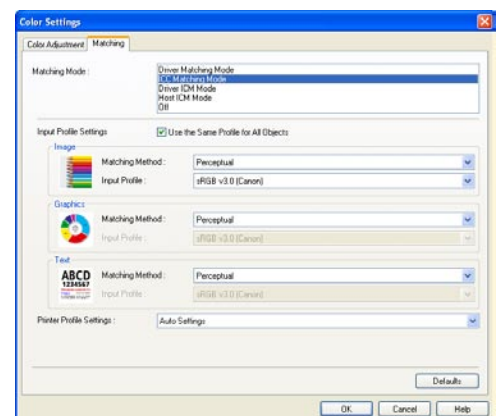
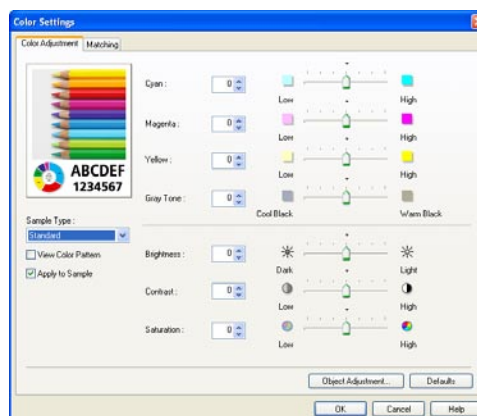
EXCELLENT

- + The Canon imagePROGRAF iPF820 performed well in BLI's applications compatibility test, successfully handling all the file formats used, including PDF, TIFF, XLS, PPT, JPG, DWF and DWG.
- + A job stream consisting of mixed file types including DWF, PDF and TIFF formats, all 24" x 36", was output without a problem. No file transmission errors were encountered nor were any problems noted in the output when compared to the digital files.
- + Canon includes a plug-in for printing from Word that includes useful tools for automatic media resizing, nesting and borderless printing.

COLOUR MANAGEMENT

GOOD

- + Various colour settings are available when the Advanced Settings tab is selected in the print driver. Sliders are available to make adjustments to C, M, Y or K, as well as to brightness, contrast, saturation and gray tone. Adjustments can be applied to images, graphics and/or text.
- + ICC profile settings are available in the Matching tab under Advanced Settings. Four matching modes (driver, ICC, driver ICM and host ICM matching) and four rendering methods (auto, perceptual, colorimetric or saturation) are selectable.



Basic and Advanced Colour Management Options in the Canon GARO Driver

PRINT QUALITY

COLOUR PRINT QUALITY

VERY GOOD

- + The Canon imagePROGRAF iPF820 produced a typical gamut for an inkjet colour printer. BLI's test instruments showed that colour remained consistent over the course of the test and no noticeable changes were detected in a visual observation of a group of images printed at the end of the test period compared to the same group printed at the start of the test.
- + At the print driver's default setting, colour charts, architectural plans and maps printed on plain paper displayed very good image quality. Fine lines and curves printed distinctly and colours were bright and of good density.
- + Colour photographs printed on Canon's Heavy Weight Satin Photo paper exhibited very good image quality at default settings, displaying high contrast and sharpness, with natural-looking colours and skin tones.

BLACK PRINT QUALITY

VERY GOOD

- + Black-only architectural documents were rated Very Good, with consistent line widths, fully formed circles and no stairstepping of diagonal lines.
- + In composite black mode, halftones were rated Very Good, with smooth fills and little to no evidence of composite colour mixing as is often seen in rival units.
- + Black print quality on plain paper was rated Very Good overall. Characters appeared dark and fully formed, with some ink spray visible, which had an impact on the clarity of the finest white lines on black background test elements. Circles were cleanly formed. Diagonal lines were straight, with no stair-stepping evident. Grayscale was visible over a normal range, from 1% to 93%.

PRINT PRODUCTIVITY

COLOUR PRINT PRODUCTIVITY

EXCELLENT

- + The imagePROGRAF iPF820 wakes from power-save mode quickly. After a week-end of non-use, the printer awoke after 34 seconds and began to print a D-size document 50 seconds after the print was initiated from the driver.
- + To assess colour print productivity, one 12-page Arch D-size DWF document was used. This document was printed using the Canon imagePROGRAF iPF820 driver set for plain paper/colour, using three different quality settings—Draft, Default and Highest Quality. In Draft mode, the 12 pages printed in 7 minutes and 26 seconds, which translates to 96.8 pages per hour (pph). In Default mode, the document printed in 12 minutes and 42 seconds, which translates to 56.7 pph, and in Highest Quality mode, the document printed in 24 minutes and 48

seconds, which translates to 30.2 pph. These are the fastest colour print speeds measured by BLI to date.

BLACK PRINT PRODUCTIVITY

VERY GOOD

- + To assess black print productivity, the same 12-page Arch D-size DWF document was used. This document was printed using the Canon imagePROGRAF iPF820 driver set for plain paper/monochrome, using three different quality settings—Draft, Default and Highest Quality. In Draft mode, the 12 pages printed in 7 minutes and 25 seconds, which translates to 97.0 pph. In Default mode, the document printed in 12 minutes and 44 seconds, which translates to 56.5 pph and in Highest Quality mode, the document printed in 24 minutes and 41 seconds, which translates to 29.2 pph. These are the fastest black print speeds measured by BLI to date.
- A job stream consisting of 10 24" x 36" monochrome files (a mix of DWF, PDF and TIFF) was sent to the printer while in a paused state. The files consisted of five or fewer pages, totalling 19 pages, and were sent using the Default plain paper/monochrome driver setting. Timing began when the printer was taken out of a paused mode, and ended when the last page of the job stream completely exited the device. The job stream was completed in 23 minutes and 13 seconds, which translates to 49.1 pph and is considered comparable to other devices tested by BLI.
- + The 19-page BLI job stream was sent to the device alternating job media selection between the two rolls. Timing began when the printer was taken out of a paused mode and ended when the last page of the job stream completely exited the device. The job stream was completed in 23 minutes and 49 seconds, which translates to 47.9 pph and is above average compared to other devices tested by BLI.
- + The additional 36 seconds required to carry out the 9 roll switches in the job stream alternating roll test versus the job stream conducted on one media roll equates to an average roll switching delay of only 4 seconds.

SECURITY FEATURES

NOT RATED

- An Administrator password can be set to enable SNMP settings and IPP authentication, and restrict TCP/IP Printing, SNMP settings and MAC address access. Additional configurable options are available in the Device Manager section in the Web utility as well as on the hard disk drive with a number of security settings available.

FEATURE SET

VERY GOOD

- + IEEE 1394 (Firewire) connectivity is optionally available.
- + The 80-GB hard drive is larger than that offered on rival units and includes 30 passwordprotected mailboxes for filing frequently printed jobs and job archival.
- + The imagePROGRAF iPF820 supports borderless printing, a feature not offered on many rival units.
- + The device includes Canon's GARO print driver and an HDI driver (for use with AutoCAD) as standard.
- + The software bundle includes two useful end-user applications: Digital Photo Front Access for easy manipulation and printing of digital camera images, and Print Plug-In For Word, which makes resizing and the layout of documents created in Microsoft Word, Excel and PowerPoint an easier and more error-free process.
- There is no inline folding unit offered with the device.
- + Both 330ml and 700ml capacity ink cartridges are offered with the unit.

SUPPORTING TEST DATA

Test Environment

Testing was conducted in BLI's European test lab, in an atmospherically controlled environment monitored by a 24/7 Dickson Temperature/RH chart recorder, ensuring that typical office conditions were maintained. All paper used in testing was allowed to acclimatise inside the test facility for a minimum of 12 hours before being used.

Test Equipment

BLI's dedicated test network in Europe, consisting of Windows 2003 servers, Windows XP workstations, 10/100/1000BaseTX network switches and CAT5 cabling.

Test Procedures

The test methods and procedures employed by BLI in its lab testing include BLI's proprietary procedures and industry-standard test procedures. In addition to a number of proprietary test documents, BLI uses industry-standard files including an IT8 test file and an ASTM monochrome test document for evaluating black image quality. In addition to a visual observation, colour print quality and gamut size is evaluated using a 1,400-patch profile software tool from Colour Confidence that was read using an EFI ES-1000 colour spectrophotometer and analyzed using Chromix ColorThink Pro 3.0 software. Density of black and colour output was measured using an X-Rite 508 densitometer.

Buyers Laboratory Inc.

Michael Danziger
CEO

Mark Lerch
COO

Anthony F. Polifrone
Managing Director

Daria M. Hoffman
Managing Editor

John Donnelly
Managing Director—
International

Pete Emory
Manager of Laboratory
Testing

David Sweetnam
European Lab and
Research Manager

BUYERS LABORATORY INC.
info@buyerslab.com

BLI International (UK) Ltd.
bliEurope@buyerslab.com

BLI International Ltd.
bliAsia@buyerslab.com

RELIABILITY

Meter Count beginning of test	0
Meter count end of test period	969 square metres
Total misfeeds or jams	0
Total Service Calls	0

PRINT DRIVER

Canon imagePROGRAF iPF820 Print Driver Features

Collate Sets	Yes
Mirror Image	Yes
Negative Image	No
N-Up Printing	2 to 16
Paper Gauge	Yes
Quantity Selection	999
Reduction/Enlargement	5% to 600%
Print Quality (dpi)	300, 600
Printing Shortcuts/Save Settings	Yes/Yes
Show Preview	Yes
Consumables Status	Yes
Rotate 90 Degrees	Yes
Auto Rotate	Yes
Secure Printing	Yes
Watermarks/Custom Watermarks	Yes/Yes

PRINT QUALITY

Colour Print Quality

	Plain Paper	Heavy Weight Satin Photo Paper
Photographic Images	N/A	Very Good
AEC Graphics	Very Good	N/A
Business Graphics	Very Good	Very Good

Colour Density – Plain Paper

Speed	Draft		Default		Highest Quality	
	100%	50%	100%	50%	100%	50%
Dot Fill	100%	50%	100%	50%	100%	50%
Cyan	0.73	0.50	0.77	0.54	0.72	0.52
Magenta	0.84	0.49	0.92	0.51	0.93	0.50
Yellow	0.73	0.50	0.84	0.49	0.85	0.49
Black	1.20	0.46	1.30	0.46	1.28	0.45

Colour Density – Heavy Weight Satin Photographic Paper

Speed	Draft		Default		Highest Quality	
	100%	50%	100%	50%	100%	50%
Dot Fill	100%	50%	100%	50%	100%	50%
sCyan	N/A	N/A	1.03	0.74	1.02	0.74
Magenta	N/A	N/A	1.58	0.58	1.57	0.57
Yellow	N/A	N/A	1.13	0.57	1.12	0.57
Black	N/A	N/A	1.68	0.55	1.68	0.54

Note: Colour density readings (dot fill) were measured on solid colour patches and at 50% density for plain and HeavyWeight Satin Photo papers at draft, default and highest quality settings.

N/A: Mode not available for Heavy Weight Satin Photo Paper

Black Print Quality – Plain Paper

Text	Very Good
Line Art	Good
Halftone Pattern	Very Good
Halftone Range	Good
Solids	Good

Black Density – Plain Paper

Speed	Draft	Default	Highest Quality
Density	1.27 – 1.31	1.47 – 1.49	1.43 – 1.45

Note: Solid black density measurements are based on eight readings corresponding to eight different solid black locations on the output.

Print density for inkjet-based printers tested to date:
1.15 to 1.49

Halftone range:

Grayscale is clearly visible from the 1% to 93% dot-fill levels, with distinct transitions between levels and consistent ink coverage within levels.

Typical halftone range for colour inkjet printers:

From the 1% to 97% dot-fill levels.

PRINT PRODUCTIVITY

Job Stream: Mixed File Types, Same Size

Sets	Actual Time (Min:Sec)	Calculated Pages Per Hour
1	23:13	49.1

BLI's job stream includes PDF, TIF and DWF files, totalling 19 pages. This test indicates the type of traffic a typical wide-format device might experience in a real-world, multi-user environment. All of the files are submitted to the controller in default mode in a specific order and sent to the printer as a group, at which time the stopwatch begins; timing ends when the last page of the last file exits the device.

Colour Print Productivity

Print Driver Quality Setting	Actual Time (Min:Sec)	Calculated Pages Per Hour
Draft	7:26	96.8
Default	12:42	56.7
Highest Quality	23:48	30.2

The 12-page D-size DWF test file was printed using the plain paper/colour setting of the Canon imagePROGRAF iPF820 driver. The actual time indicated is the time it took to RIP, image and deliver all pages of the test document to the collection bin.

Black Print Productivity

Print Driver Quality Setting	Actual Time (Min:Sec)	Calculate Pages Per Hour
Draft	7:25	97.0
Default	12:44	56.5
Highest Quality	24:41	29.2

The 12-page D-size DWF test file was printed using the plain paper/monochrome setting of the Canon imagePROGRAF iPF820 driver. The actual time indicated is the time it took to RIP, image and deliver all pages of the test document to the collection bin.

CERTIFICATE OF RELIABILITY

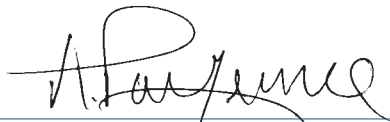
Awarded to

CANON, INC.

for the performance of the

Canon imagePROGRAF iPF820

in BLI's in-house durability test



ANTHONY F. POLIFRONE
MANAGING DIRECTOR



OCTOBER 2008

DATE

This is to certify that when subjected to a 969-square-meter Buyers Lab durability test in a networked environment, the Canon imagePROGRAF iPF820 proved to be a highly reliable product.

BUYERS LABORATORY INC.

THE LEADING GLOBAL INDEPENDENT OFFICE PRODUCTS TEST LAB AND BUSINESS CONSUMER ADVOCATE

NORTH AMERICA ■ EUROPE ■ ASIA ■ www.BuyersLab.com

COPYRIGHT ©2008 BUYERS LABORATORY. REPRODUCED WITH THE WRITTEN PERMISSION OF BLI.